

IFI27 Antibody

Catalog No: #45633

Package Size: #45633-1 50ul #45633-2 100ul

Orders: order@signalwayantibody.com

Support: tech@signalwayantibody.com

Description

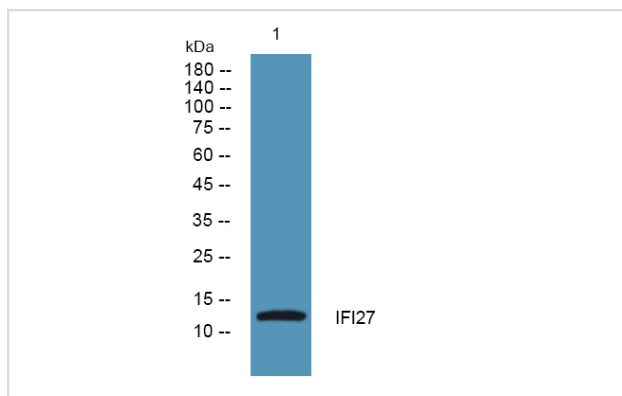
Product Name	IFI27 Antibody
Host Species	Rabbit
Clonality	Polyclonal
Purification	Immunogen affinity purified
Applications	WB IHC
Species Reactivity	Hu,Ms,Rt
Specificity	IFI27 Antibody detects endogenous levels of total IFI27
Immunogen Type	Peptide
Immunogen Description	A synthesized peptide derived from human IFI27
Target Name	IFI27
Other Names	IFI27, FAM14D, ISG12A, p27, ISG12, ISG12(a)
Accession No.	Swiss-Prot#: P40305NCBI Gene ID:3429
Uniprot	P40305
GeneID	3429;
Calculated MW	11 kDa
Concentration	1.0mg/mL
Formulation	Liquid in PBS containing 50% glycerol, and 0.02% sodium azide.
Storage	Store at -20°C

Application Details

Western blotting: 1:1000-3000

IHC 1:50-1:200

Images



Western blot analysis of lysates from HCT116 cells, primary antibody was diluted at 1:1000, 4° over night

Note: This product is for in vitro research use only