

LRP12 antibody

Catalog No: #23126

Orders: order@signalwayantibody.com

Support: tech@signalwayantibody.com

Description

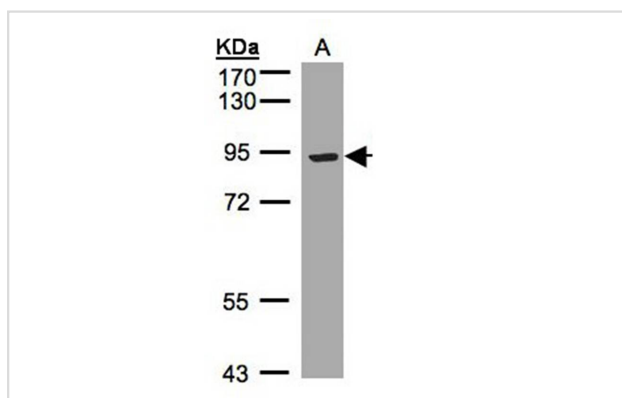
Product Name	LRP12 antibody
Host Species	Rabbit
Clonality	Polyclonal
Purification	Purified by antigen-affinity chromatography.
Applications	WB
Species Reactivity	Hu
Immunogen Type	Peptide
Immunogen Description	Synthetic peptide contain a sequence corresponding to a region within amino acids 795 and 859 of Human LRP12
Target Name	LRP12
Other Names	DKFZp781F1053; FLJ12929; ST7
Accession No.	Swiss-Prot:Q9Y561Gene ID:29967
Uniprot	Q9Y561
GeneID	29967;
Concentration	1mg/ml
Formulation	Supplied in 0.1M Tris-buffered saline with 10% Glycerol (pH7.0). 0.01% Thimerosal was added as a preservative.
Storage	Store at -20°C for long term preservation (recommended). Store at 4°C for short term use.

Application Details

Predicted MW: 95kd

Western blotting: 1:500-1:3000

Images



Sample(30 ug whole cell lysate)
 A: Hep G2
 7.5% SDS PAGE
 Primary antibody diluted at 1: 1000

Background

This gene was identified by its differential expression in cancer cells. The product of this gene is predicted to be a transmembrane protein. The level of

this protein was found to be lower in tumor derived cell lines compared to normal cells. This gene was thus proposed to be a candidate tumor suppressor gene. Two transcript variants encoding different isoforms have been found for this gene. [provided by RefSeq]

Note: This product is for in vitro research use only