

ITGAD Antibody

Catalog No: #45636

Package Size: #45636-1 50ul #45636-2 100ul

Orders: order@signalwayantibody.comSupport: tech@signalwayantibody.com

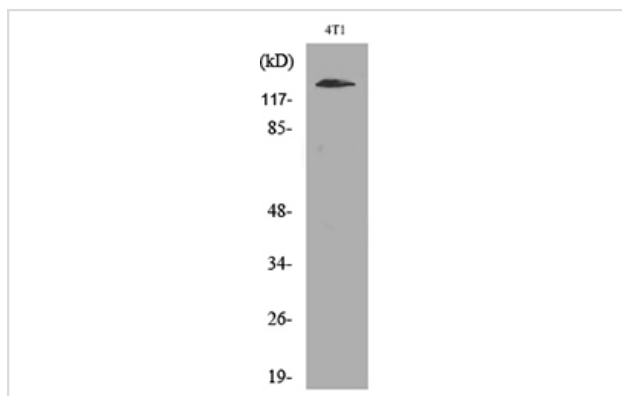
Description

Product Name	ITGAD Antibody
Host Species	Rabbit
Clonality	Polyclonal
Purification	Immunogen affinity purified
Applications	WB
Species Reactivity	Hu Ms Rt
Specificity	ITGAD Antibody detects endogenous levels of total ITGAD
Immunogen Type	Peptide
Immunogen Description	A synthesized peptide derived from human ITGAD
Target Name	ITGAD
Other Names	ITGAD, ADB2, CD11D, Integrin, alpha D, Leukointegrin alpha D, Leukointegrin alpha d chain, CD11d antigen, Integrin alpha-D
Accession No.	Swiss-Prot#: Q13349NCBI Gene ID:3681
Uniprot	Q13349
GeneID	3681;
Calculated MW	126 kDa
Concentration	1.0mg/mL
Formulation	Rabbit IgG in phosphate buffered saline , pH 7.4, 150mM NaCl, 0.02% sodium azide and 50% glycerol.
Storage	Store at -20°C

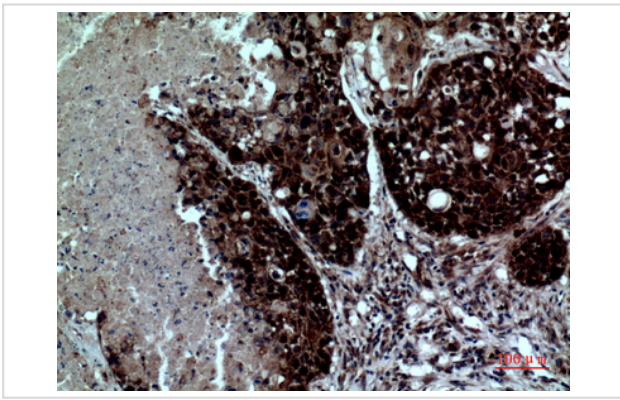
Application Details

Western blotting: 1:1000-3000

Images



Western blot analysis of lysate from 4T1 cells, using ITGAD Antibody.



Immunohistochemical analysis of paraffin-embedded human-lung, antibody was diluted at 1:100

Note: This product is for in vitro research use only