

K1H2 Antibody

Catalog No: #45643

Package Size: #45643-1 50ul #45643-2 100ul

Orders: order@signalwayantibody.comSupport: tech@signalwayantibody.com

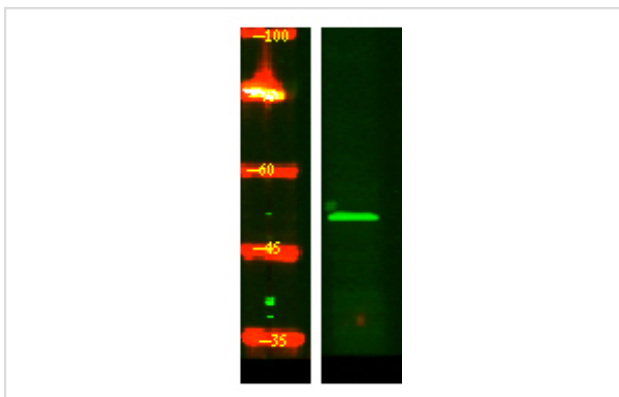
Description

Product Name	K1H2 Antibody
Host Species	Rabbit
Clonality	Polyclonal
Purification	Immunogen affinity purified
Applications	WB
Species Reactivity	Hu
Specificity	K1H2 Antibody detects endogenous levels of total K1H2
Immunogen Type	Peptide
Immunogen Description	A synthesized peptide derived from human K1H2
Target Name	K1H2
Other Names	KRT32, Hard keratin, type I, 2, HHa2, Keratin-32, KRTHA2, HA2, K32, Keratin 32, Keratin, hair, acidic, 2, Keratin, type I cuticular Ha2, HA-2, Hair keratin, type I Ha2, HKA2, Type I cuticular hair keratin
Accession No.	Swiss-Prot#: Q14532NCBI Gene ID:3882
Uniprot	Q14532
GeneID	3882;
Calculated MW	50 kDa
Concentration	1.0mg/mL
Formulation	Liquid in PBS containing 50% glycerol, and 0.02% sodium azide.
Storage	Store at -20°C

Application Details

Western blotting: 1:1000-3000

Images



Western Blot analysis of Hela lysates, using primary antibody at 1:1000 dilution.

Note: This product is for in vitro research use only