

MRPL19 Antibody

Catalog No: #45713

Package Size: #45713-1 50ul #45713-2 100ul

Orders: order@signalwayantibody.comSupport: tech@signalwayantibody.com

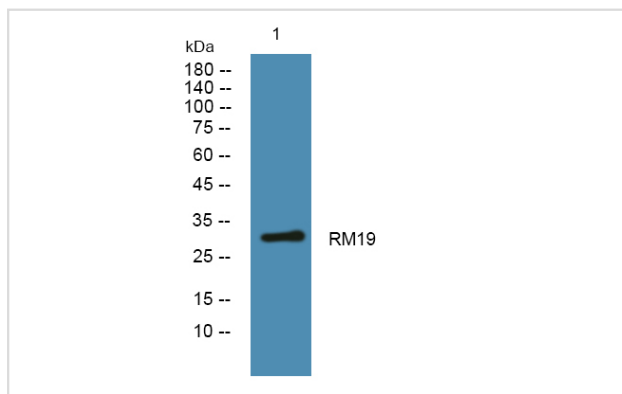
Description

Product Name	MRPL19 Antibody
Host Species	Rabbit
Clonality	Polyclonal
Purification	Immunogen affinity purified
Applications	WB
Species Reactivity	Hu Ms
Specificity	MRPL19 Antibody detects endogenous levels of total MRPL19
Immunogen Type	Peptide
Immunogen Description	A synthesized peptide derived from human MRPL19
Target Name	MRPL19
Other Names	MRPL19, L19mt, L15mt, MRP-L15, MRP-L19, KIAA0104, RLX1, RPML15
Accession No.	Swiss-Prot#: P49406NCBI Gene ID:9801
Uniprot	P49406
GeneID	9801;
Calculated MW	34 kDa
Concentration	1.0mg/mL
Formulation	Liquid in PBS containing 50% glycerol, and 0.02% sodium azide.
Storage	Store at -20°C

Application Details

Western blotting: 1:1000-3000

Images



Western blot analysis of lysates from SH-SY5Y cells, primary antibody was diluted at 1:1000, 4° over night

Note: This product is for in vitro research use only