

MRPL34 Antibody

Catalog No: #45716

Package Size: #45716-1 50ul #45716-2 100ul

Orders: order@signalwayantibody.comSupport: tech@signalwayantibody.com

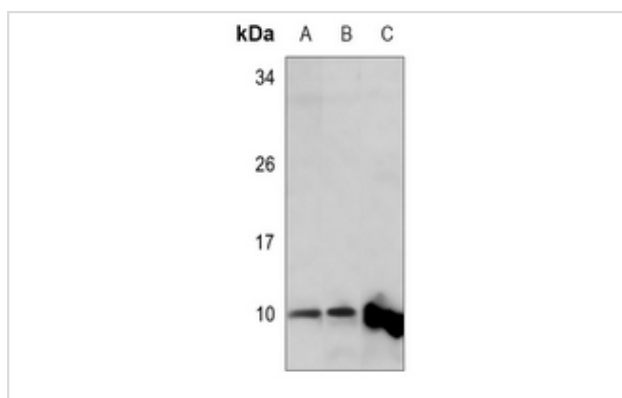
Description

Product Name	MRPL34 Antibody
Host Species	Rabbit
Clonality	Polyclonal
Purification	Immunogen affinity purified
Applications	WB, IH
Species Reactivity	Hu Ms
Specificity	MRPL34 Antibody detects endogenous levels of total MRPL34
Immunogen Type	Peptide
Immunogen Description	A synthesized peptide derived from human MRPL34
Target Name	MRPL34
Other Names	MRPL34, L34mt, MRP-L34
Accession No.	Swiss-Prot#: Q9BQ48NCBI Gene ID:64981
Uniprot	Q9BQ48
GeneID	64981;
Calculated MW	10 kDa
Concentration	1.0mg/mL
Formulation	Liquid in 0.42% Potassium phosphate, 0.87% Sodium chloride, pH 7.3, 30% glycerol, and 0.01% sodium azide.
Storage	Store at -20°C

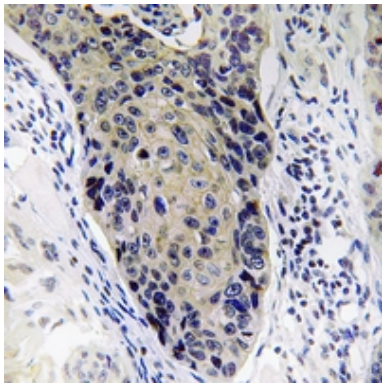
Application Details

WB (1/500 - 1/1000), IH (1/50 - 1/200)

Images



Western blot analysis of MRPL34 expression in Myla2059 (A), mouse kidney (B), rat kidney (C) whole cell lysates.



Immunohistochemical analysis of MRPL34 staining in human lung cancer formalin fixed paraffin embedded tissue section. The section was pre-treated using heat mediated antigen retrieval with sodium citrate buffer (pH 6.0). The section was then incubated with the antibody at room temperature and detected using an HRP conjugated compact polymer system. DAB was used as the chromogen. The section was then counterstained with haematoxylin and mounted with DPX.

Note: This product is for in vitro research use only