

MRPL53 Antibody

Catalog No: #45722

Package Size: #45722-1 50ul #45722-2 100ul

Orders: order@signalwayantibody.com

Support: tech@signalwayantibody.com

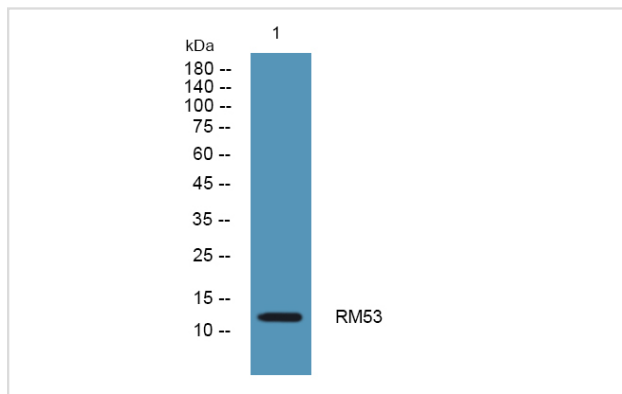
Description

| | |
|-----------------------|--|
| Product Name | MRPL53 Antibody |
| Host Species | Rabbit |
| Clonality | Polyclonal |
| Purification | Immunogen affinity purified |
| Applications | WB |
| Species Reactivity | Hu Ms Rt |
| Specificity | MRPL53 Antibody detects endogenous levels of total MRPL53 |
| Immunogen Type | Peptide |
| Immunogen Description | A synthesized peptide derived from human MRPL53 |
| Target Name | MRPL53 |
| Other Names | 39S ribosomal protein L53, mitochondrial L53mt MRP-L53 |
| Accession No. | Swiss-Prot#: Q96EL3NCBI Gene ID:116540 |
| Uniprot | Q96EL3 |
| GeneID | 116540; |
| Calculated MW | 12 kDa |
| Concentration | 1.0mg/mL |
| Formulation | Liquid in PBS containing 50% glycerol, and 0.02% sodium azide. |
| Storage | Store at -20°C |

Application Details

Western blotting: 1:1000-3000

Images



Western blot analysis of lysates from DU145 cells, primary antibody was diluted at 1:1000, 4° over night

Note: This product is for in vitro research use only