

RPL29 Antibody

Catalog No: #45731

Package Size: #45731-1 50ul #45731-2 100ul

Orders: order@signalwayantibody.comSupport: tech@signalwayantibody.com

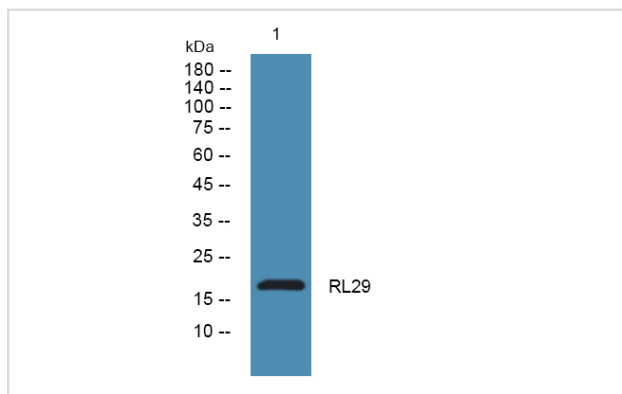
Description

Product Name	RPL29 Antibody
Host Species	Rabbit
Clonality	Polyclonal
Purification	Immunogen affinity purified
Applications	WB
Species Reactivity	Hu Ms Rt
Specificity	RPL29 Antibody detects endogenous levels of total RPL29
Immunogen Type	Peptide
Immunogen Description	A synthesized peptide derived from human RPL29
Target Name	RPL29
Other Names	RPL29, 60S ribosomal protein L29, HUMRPL29, HIP, HP/HS-interacting protein, Ribosomal protein L29, L29
Accession No.	Swiss-Prot#: P47914NCBI Gene ID:6159
Uniprot	P47914
GeneID	6159;
Calculated MW	18 kDa
Concentration	1.0mg/mL
Formulation	Liquid in PBS containing 50% glycerol, and 0.02% sodium azide.
Storage	Store at -20°C

Application Details

Western blotting: 1:1000-3000

Images



Note: This product is for in vitro research use only