

# RPL37 Antibody

Catalog No: #45733



Package Size: #45733-1 50ul #45733-2 100ul

Orders: [order@signalwayantibody.com](mailto:order@signalwayantibody.com)  
Support: [tech@signalwayantibody.com](mailto:tech@signalwayantibody.com)

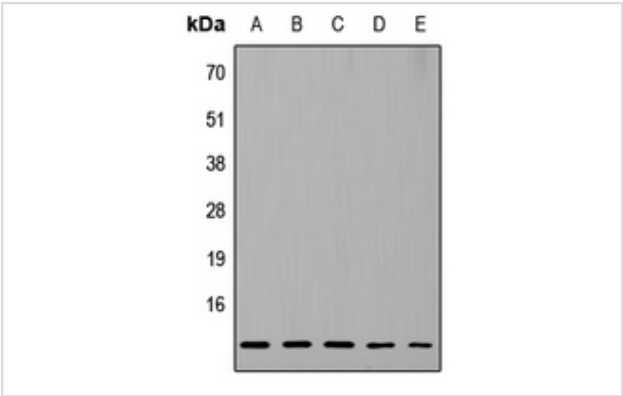
## Description

Product Name	RPL37 Antibody
Host Species	Rabbit
Clonality	Polyclonal
Purification	Immunogen affinity purified
Applications	WB, IH
Species Reactivity	Hu Ms Rt
Specificity	RPL37 Antibody detects endogenous levels of total RPL37
Immunogen Type	Peptide
Immunogen Description	A synthesized peptide derived from human RPL37
Target Name	RPL37
Other Names	RPL37, 60S ribosomal protein L37a, 60S ribosomal protein L37, L37, Ribosomal protein L37, G1.16
Accession No.	Swiss-Prot#: P61927NCBI Gene ID:6167
Uniprot	P61927
GeneID	6167;
Calculated MW	11 kDa
Concentration	1.0mg/mL
Formulation	Liquid in 0.42% Potassium phosphate, 0.87% Sodium chloride, pH 7.3, 30% glycerol, and 0.01% sodium azide.
Storage	Store at -20°C

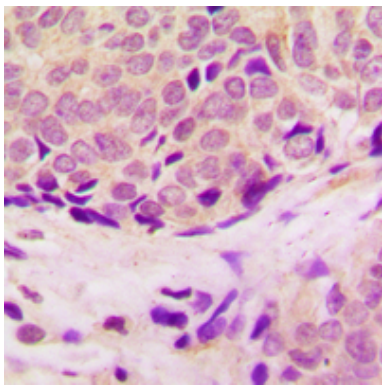
## Application Details

WB (1/500 - 1/1000), IH (1/100 - 1/200)

## Images



Western blot analysis of RPL37 expression in HeLa (A), MCF7 (B), Raw264.7 (C), PC12 (D), H9C2 (E) whole cell lysates.



Immunohistochemical analysis of RPL37 staining in human breast cancer formalin fixed paraffin embedded tissue section. The section was pre-treated using heat mediated antigen retrieval with sodium citrate buffer (pH 6.0). The section was then incubated with the antibody at room temperature and detected using an HRP conjugated compact polymer system. DAB was used as the chromogen. The section was then counterstained with haematoxylin and mounted with DPX.

---

Note: This product is for in vitro research use only