

RPL38 Antibody

Catalog No: #45734

Package Size: #45734-1 50ul #45734-2 100ul

Orders: order@signalwayantibody.comSupport: tech@signalwayantibody.com

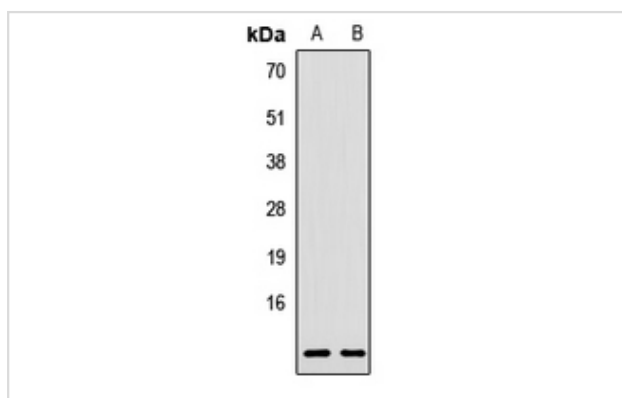
Description

Product Name	RPL38 Antibody
Host Species	Rabbit
Clonality	Polyclonal
Purification	Immunogen affinity purified
Applications	WB
Species Reactivity	Hu Ms Rt
Specificity	RPL38 Antibody detects endogenous levels of total RPL38
Immunogen Type	Peptide
Immunogen Description	A synthesized peptide derived from human RPL38
Target Name	RPL38
Other Names	RPL38, 60S ribosomal protein L38, Ribosomal protein L38, L38
Accession No.	Swiss-Prot#: P63173NCBI Gene ID:6169
Uniprot	P63173
GeneID	6169;
Calculated MW	8 kDa
Concentration	1.0mg/mL
Formulation	Liquid in 0.42% Potassium phosphate, 0.87% Sodium chloride, pH 7.3, 30% glycerol, and 0.01% sodium azide.
Storage	Store at -20°C

Application Details

WB (1/500 - 1/2000)

Images



Western blot analysis of RPL38 expression in HeLa (A), MCF7 (B) whole cell lysates.

Note: This product is for in vitro research use only