

ADAM23 Antibody

Catalog No: #45749

Package Size: #45749-1 50ul #45749-2 100ul

Orders: order@signalwayantibody.com

Support: tech@signalwayantibody.com

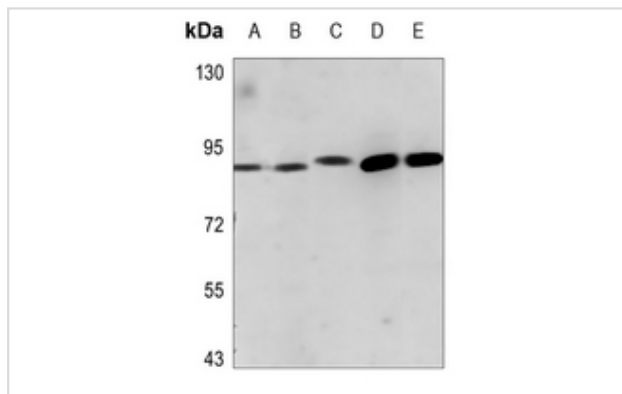
Description

Product Name	ADAM23 Antibody
Host Species	Rabbit
Clonality	Polyclonal
Purification	Immunogen affinity purified
Applications	WB
Species Reactivity	Human, Mouse, Rat, Bovine
Specificity	ADAM23 Antibody detects endogenous levels of total ADAM23
Immunogen Type	Peptide
Immunogen Description	KLH-conjugated synthetic peptide encompassing a sequence within the C-term region of human ADAM23. The exact sequence is proprietary.
Target Name	ADAM23
Other Names	ADAM23, ADAM 23, MDC-L, MDC3, MDC-3
Accession No.	Swiss-Prot#: O75077NCBI Gene ID:8745
Uniprot	O75077
GeneID	8745;
Calculated MW	92 kDa
Concentration	1.0mg/mL
Formulation	Liquid in 0.42% Potassium phosphate, 0.87% Sodium chloride, pH 7.3, 30% glycerol, and 0.01% sodium azide.
Storage	Store at -20°C

Application Details

WB (1/500 - 1/1000)

Images



Western blot analysis of ADAM23 expression in HEK293T (A), H1792 (B), SGC7901 (C), mouse heart (D), rat heart (E) whole cell lysates.

Note: This product is for in vitro research use only