

SLC25A5 Antibody

Catalog No: #45754

Package Size: #45754-1 50ul #45754-2 100ul

Orders: order@signalwayantibody.com

Support: tech@signalwayantibody.com

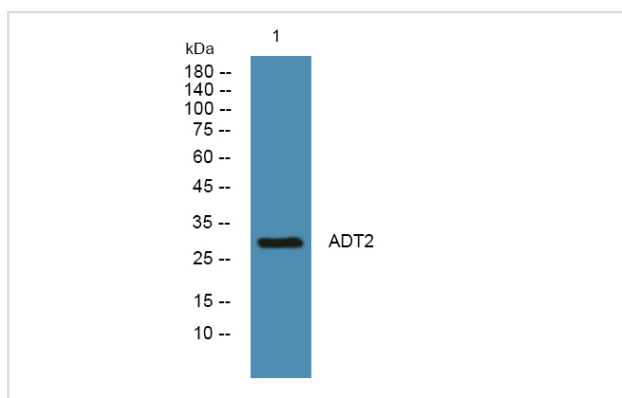
Description

Product Name	SLC25A5 Antibody
Host Species	Rabbit
Clonality	Polyclonal
Purification	Immunogen affinity purified
Applications	WB
Species Reactivity	Hu Ms Rt
Specificity	SLC25A5 Antibody detects endogenous levels of total SLC25A5
Immunogen Type	Peptide
Immunogen Description	A synthesized peptide derived from human SLC25A5
Target Name	SLC25A5
Other Names	SLC25A5, AAC2, 2F1, ANT 2, ADP/ATP carrier protein, ADP/ATP translocase 2, ADP,ATP carrier protein 2, ATP/ADP translocator isoform-2, T3, ANT2, T2
Accession No.	Swiss-Prot#: P05141NCBI Gene ID:292
Uniprot	P05141
GeneID	292;
Calculated MW	33 kDa
Concentration	1.0mg/mL
Formulation	Liquid in PBS containing 50% glycerol, and 0.02% sodium azide.
Storage	Store at -20°C

Application Details

Western blotting: 1:1000-3000

Images



Western blot analysis of lysates from SH-SY5Y cells, primary antibody was diluted at 1:1000, 4° over night

Note: This product is for in vitro research use only