

## SLC7A10 Antibody

Catalog No: #45776

Package Size: #45776-1 50ul #45776-2 100ul

Orders: order@signalwayantibody.com

Support: tech@signalwayantibody.com

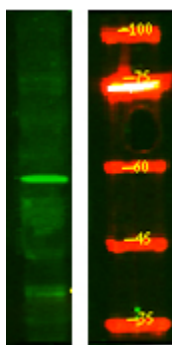
## Description

Product Name	SLC7A10 Antibody
Host Species	Rabbit
Clonality	Polyclonal
Purification	Immunogen affinity purified
Applications	WB
Species Reactivity	Hu Ms Rt
Specificity	SLC7A10 Antibody detects endogenous levels of total SLC7A10
Immunogen Type	Peptide
Immunogen Description	A synthesized peptide derived from human SLC7A10
Target Name	SLC7A10
Other Names	SLC7A10, ASC1, ASC-1, HASC-1
Accession No.	Swiss-Prot#: Q9NS82NCBI Gene ID:56301
Uniprot	Q9NS82
GeneID	56301;
Calculated MW	57 kDa
Concentration	1.0mg/mL
Formulation	Liquid in PBS containing 50% glycerol, and 0.02% sodium azide.
Storage	Store at -20°C

## Application Details

Western blotting: 1:1000-3000

## Images



Western Blot analysis of HEK293 lysates, using primary antibody at 1:1000 dilution.

---

Note: This product is for in vitro research use only