

CABIN1 Antibody

Catalog No: #45820

Package Size: #45820-1 50ul #45820-2 100ul

Orders: order@signalwayantibody.comSupport: tech@signalwayantibody.com

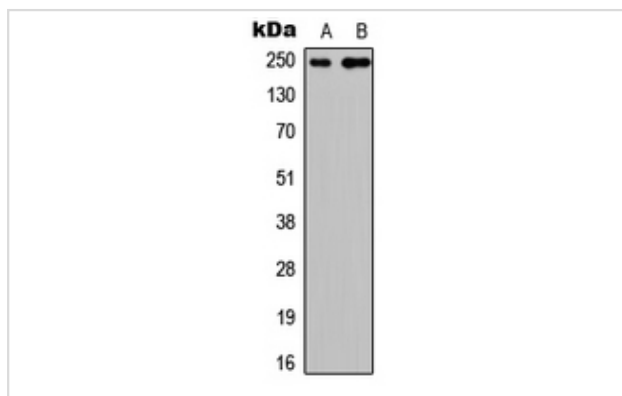
Description

Product Name	CABIN1 Antibody
Host Species	Rabbit
Clonality	Polyclonal
Purification	Immunogen affinity purified
Applications	WB
Species Reactivity	Hu Ms Rt
Specificity	CABIN1 Antibody detects endogenous levels of total CABIN1
Immunogen Type	Peptide
Immunogen Description	A synthesized peptide derived from human CABIN1
Target Name	CABIN1
Other Names	KIAA0330, Calcineurin inhibitor
Accession No.	Swiss-Prot#: Q9Y6J0NCBI Gene ID:23523
Uniprot	Q9Y6J0
GeneID	23523;
Calculated MW	246kDa
Concentration	1.0mg/mL
Formulation	Liquid in 0.42% Potassium phosphate, 0.87% Sodium chloride, pH 7.3, 30% glycerol, and 0.01% sodium azide.
Storage	Store at -20°C

Application Details

WB (1/500 - 1/1000)

Images



Western blot analysis of CABIN1 expression in HEK293T (A), PC12 (B) whole cell lysates.

Note: This product is for in vitro research use only