

CALML3 Antibody

Catalog No: #45833

Package Size: #45833-1 50ul #45833-2 100ul

Orders: order@signalwayantibody.com

Support: tech@signalwayantibody.com

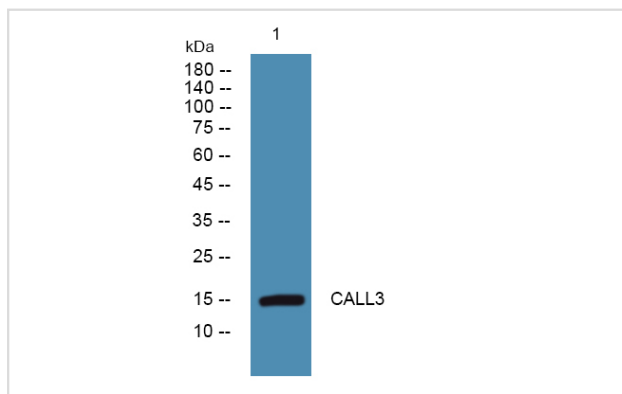
Description

Product Name	CALML3 Antibody
Host Species	Rabbit
Clonality	Polyclonal
Purification	Immunogen affinity purified
Applications	WB
Species Reactivity	Hu Ms Rt
Specificity	CALML3 Antibody detects endogenous levels of total CALML3
Immunogen Type	Peptide
Immunogen Description	A synthesized peptide derived from human CALML3
Target Name	CALML3
Other Names	CALML3, Calmodulin-like 3, Calmodulin-like protein 3, CLP, CaM-like protein
Accession No.	Swiss-Prot#: P27482NCBI Gene ID:810
Uniprot	P27482
GeneID	810;
Calculated MW	17 kDa
Concentration	1.0mg/mL
Formulation	Liquid in PBS containing 50% glycerol, and 0.02% sodium azide.
Storage	Store at -20°C

Application Details

Western blotting: 1:1000-3000

Images



Note: This product is for in vitro research use only