

CTAG2 Antibody

Catalog No: #45840

Package Size: #45840-1 50ul #45840-2 100ul

Orders: order@signalwayantibody.com

Support: tech@signalwayantibody.com

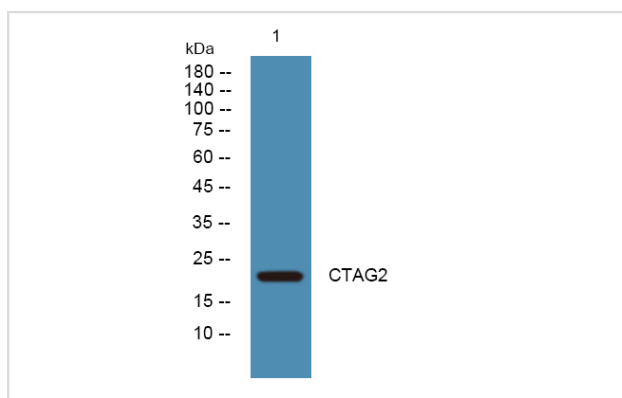
Description

Product Name	CTAG2 Antibody
Host Species	Rabbit
Clonality	Polyclonal
Purification	Immunogen affinity purified
Applications	WB
Species Reactivity	Hu
Specificity	CTAG2 Antibody detects endogenous levels of total CTAG2
Immunogen Type	Peptide
Immunogen Description	A synthesized peptide derived from human CTAG2
Target Name	CTAG2
Other Names	CTAG2, CAMEL, CT2, Cancer/testis antigen 6.2, CT6.2, CT6.2a, CT6.2b, ESO2, LAGE-1a protein, L antigen family member 1, LAGE-1a, LAGE-1b, LAGE1, Cancer/testis antigen 2, LAGE-1, LAGE2B
Accession No.	Swiss-Prot#: O75638NCBI Gene ID:30848
Uniprot	O75638
GeneID	30848;
Calculated MW	21 kDa
Concentration	1.0mg/mL
Formulation	Liquid in PBS containing 50% glycerol, and 0.02% sodium azide.
Storage	Store at -20°C

Application Details

Western blotting: 1:1000-3000

Images



Western blot analysis of lysates from DU145 cells, primary antibody was diluted at 1:1000, 4° over night

Note: This product is for in vitro research use only