

CPA4 Antibody

Catalog No: #45848

Package Size: #45848-1 50ul #45848-2 100ul

Orders: order@signalwayantibody.comSupport: tech@signalwayantibody.com

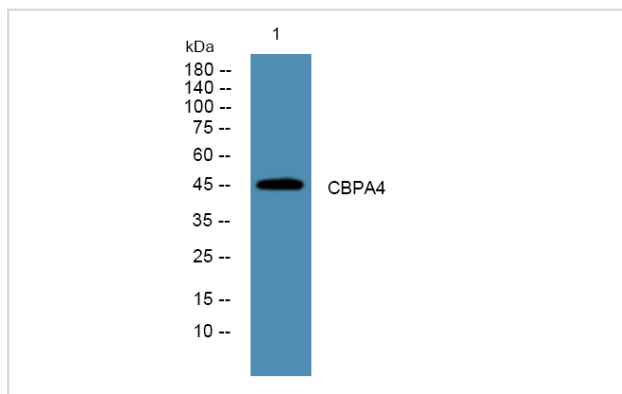
Description

Product Name	CPA4 Antibody
Host Species	Rabbit
Clonality	Polyclonal
Purification	Immunogen affinity purified
Applications	WB
Species Reactivity	Hu Ms
Specificity	CPA4 Antibody detects endogenous levels of total CPA4
Immunogen Type	Peptide
Immunogen Description	A synthesized peptide derived from human CPA4
Target Name	CPA4
Other Names	CPA4, Carboxypeptidase A4, Carboxypeptidase A3
Accession No.	Swiss-Prot#: Q9UI42NCBI Gene ID:51200
Uniprot	Q9UI42
GeneID	51200;
Calculated MW	47 kDa
Concentration	1.0mg/mL
Formulation	Liquid in PBS containing 50% glycerol, and 0.02% sodium azide.
Storage	Store at -20°C

Application Details

Western blotting: 1:1000-3000

Images



Western blot analysis of lysates from SH-SY5Y cells, primary antibody was diluted at 1:1000, 4° over night

Note: This product is for in vitro research use only