

CPD Antibody

Catalog No: #45850

Package Size: #45850-1 50ul #45850-2 100ul

Orders: order@signalwayantibody.comSupport: tech@signalwayantibody.com

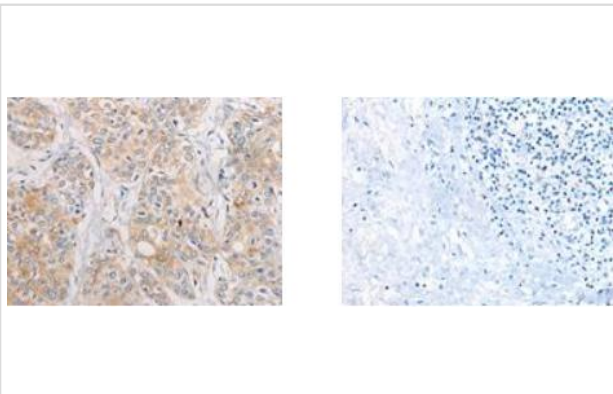
Description

Product Name	CPD Antibody
Host Species	Rabbit
Clonality	Polyclonal
Purification	Antigen affinity purification
Applications	IHC
Species Reactivity	Hu
Specificity	CPD Antibody detects endogenous levels of total CPD
Immunogen Type	Peptide
Immunogen Description	A synthesized peptide derived from human CPD
Target Name	CPD
Other Names	CPD, Carboxypeptidase D, gp180, Metalloprotease D
Accession No.	Swiss-Prot#: O75976NCBI Gene ID:1362
Uniprot	O75976
GeneID	1362;
Calculated MW	153kDa
Concentration	1.0mg/mL
Formulation	pH7.4 PBS, 0.05% NaN ₃ , 40% Glycerol
Storage	Store at -20°C

Application Details

IHC 1:40-1:200

Images



The image on the left is immunohistochemistry of paraffin-embedded Human prostate cancer tissue using (CPD Antibody) at dilution 1/70, on the right is treated with synthetic peptide. (Original magnification: 200)

Background

The metalloprotease family of enzymes is divided into 2 subfamilies based on sequence similarities. The

pancreatic carboxypeptidase-like and the regulatory B-type carboxypeptidase subfamilies. Carboxypeptidase D has been identified as a regulatory B-type carboxypeptidase. CPD is a homolog of duck gp180, a hepatitis B virus-binding protein. Transcript variants utilizing alternative polyadenylation signals exist for this gene.

Note: This product is for in vitro research use only