

KAT2B Polyclonal Antibody

Catalog No: #27224

Package Size: #27224-1 50ul #27224-2 100ul

Orders: order@signalwayantibody.comSupport: tech@signalwayantibody.com

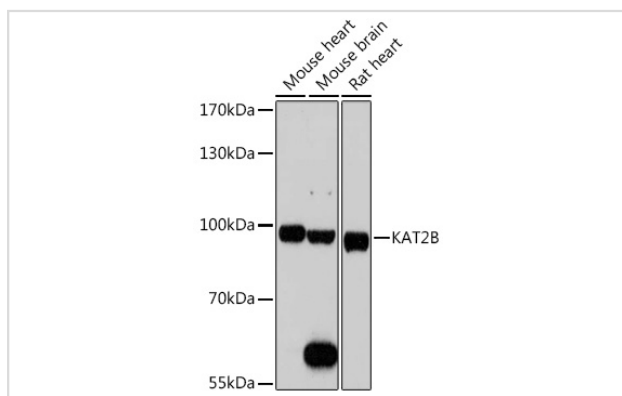
Description

Product Name	KAT2B Polyclonal Antibody
Host Species	Rabbit
Clonality	Polyclonal
Isotype	IgG
Purification	Affinity purification
Applications	WB,IF
Species Reactivity	Human,Mouse,Rat
Immunogen Description	Recombinant fusion protein of human KAT2B (NP_003875.3).
Other Names	KAT2B;CAF;P/CAF;PCAF
Accession No.	Uniprot:Q92831GeneID:8850
Uniprot	Q92831
GeneID	8850
Calculated MW	Refer to Figures
SDS-PAGE MW	93kDa
Formulation	PBS with 0.02% sodium azide,50% glycerol,pH7.3.
Storage	Store at -20°C. Avoid freeze / thaw cycles.

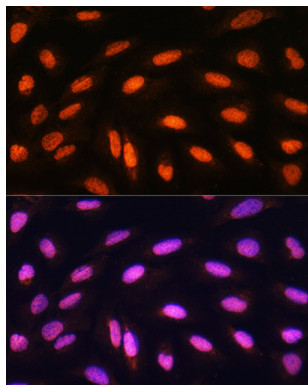
Application Details

WB □ 1:500 - 1:2000 IF □ 1:50 - 1:200

Images



Western blot analysis of extracts of various cell lines, using KAT2B antibody.



Immunofluorescence analysis of U2OS cells using KAT2B Rabbit pAb.

Background

CBP and p300 are large nuclear proteins that bind to many sequence-specific factors involved in cell growth and/or differentiation, including c-jun and the adenoviral oncoprotein E1A. The protein encoded by this gene associates with p300/CBP. It has in vitro and in vivo binding activity with CBP and p300, and competes with E1A for binding sites in p300/CBP. It has histone acetyl transferase activity with core histones and nucleosome core particles, indicating that this protein plays a direct role in transcriptional regulation.

Note: This product is for in vitro research use only