

## GEN1 Polyclonal Antibody

Catalog No: #27249

Package Size: #27249-1 50ul #27249-2 100ul

Orders: order@signalwayantibody.com

Support: tech@signalwayantibody.com

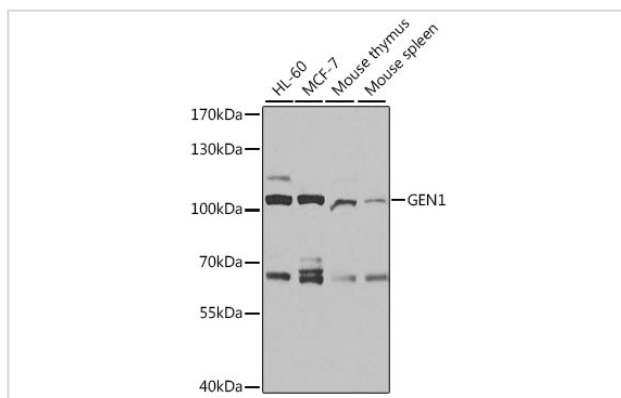
## Description

Product Name	GEN1 Polyclonal Antibody
Host Species	Rabbit
Clonality	Polyclonal
Isotype	IgG
Purification	Affinity purification
Applications	WB
Species Reactivity	Human,Mouse
Immunogen Description	Recombinant fusion protein of human GEN1 (NP_872431.3).
Other Names	GEN1; Gen; flap endonuclease GEN homolog 1
Accession No.	Swiss-Prot#:Q17RS7NCBI Gene ID:348654
Uniprot	Q17RS7
GeneID	348654;
Calculated MW	103kDa
Formulation	Avoid freeze / thaw cycles. Buffer: PBS with 50% glycerol, pH7.4.
Storage	Store at -20°C

## Application Details

WB □ 1:500 - 1:2000

## Images



Western blot analysis of extracts of various cell lines, using GEN1 at 1:1000 dilution.

## Background

This gene encodes a member of the Rad2/xeroderma pigmentosum group G nuclease family, whose members are characterized by N-terminal and internal xeroderma pigmentosum group G nuclease domains followed by helix-hairpin-helix domains and disordered C-terminal domains. The protein encoded by this gene is involved in resolution of Holliday junctions, which are intermediate four-way structures that covalently link DNA during homologous recombination and double-strand break repair. The protein resolves Holliday junctions by creating dual incisions across the junction to

produce nicked duplex products that can be ligated. In addition, this protein has been found to localize to centrosomes where it has been implicated in regulation of centrosome integrity. Alternative splicing results in multiple transcript variants.

---

Note: This product is for in vitro research use only