

RBM22 Polyclonal Antibody

Catalog No: #27260

Package Size: #27260-1 50ul #27260-2 100ul

Orders: order@signalwayantibody.comSupport: tech@signalwayantibody.com

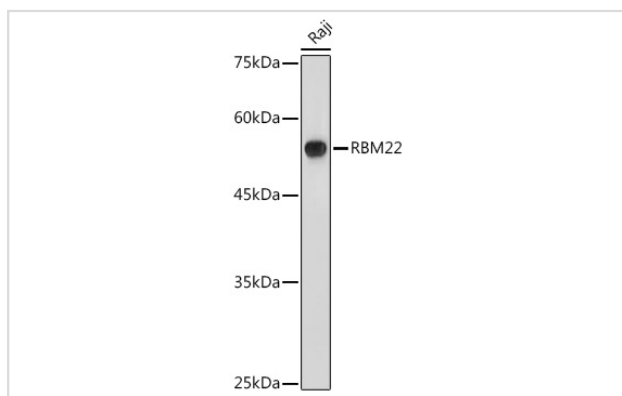
Description

Product Name	RBM22 Polyclonal Antibody
Host Species	Rabbit
Clonality	Polyclonal
Isotype	IgG
Purification	Affinity purification
Applications	WB
Species Reactivity	Human,Mouse,Rat
Immunogen Description	Recombinant fusion protein of human RBM22 (NP_060517.1).
Other Names	RBM22;Cwc2;ZC3H16;fSAP47
Accession No.	Uniprot:Q9NW64GeneID:55696
Uniprot	Q9NW64
GeneID	55696
Calculated MW	47kDa
SDS-PAGE MW	50KDa
Formulation	PBS with 0.02% sodium azide,50% glycerol,pH7.3.
Storage	Store at -20°C. Avoid freeze / thaw cycles.

Application Details

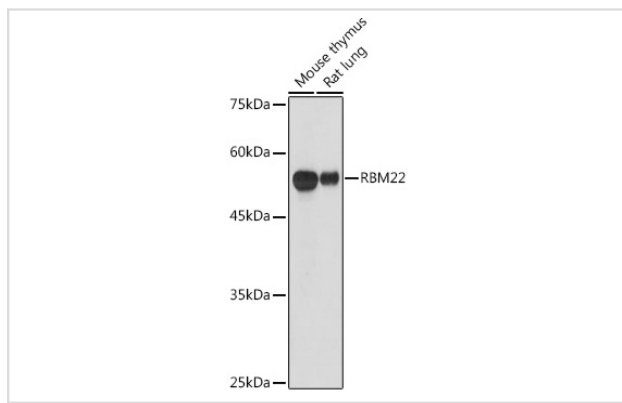
WB □ 1:500 - 1:2000

Images



Western blot analysis of extracts of Raji cells, using RBM22 antibody.

Western blot analysis of extracts of various cell lines, using RBM22 antibody.



Background

This gene encodes an RNA binding protein. The encoded protein may play a role in cell division and may be involved in pre-mRNA splicing. Related pseudogenes exist on chromosomes 6, 7, 9, 13, 16, 18, and X.

Note: This product is for in vitro research use only