

ADAM22 Polyclonal Antibody

Catalog No: #27263

Package Size: #27263-1 50ul #27263-2 100ul

Orders: order@signalwayantibody.com

Support: tech@signalwayantibody.com

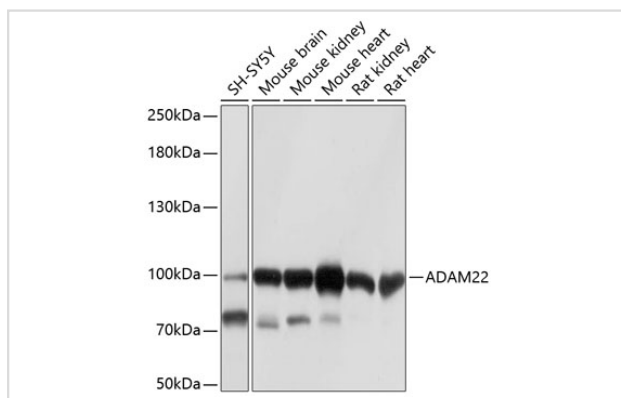
Description

Product Name	ADAM22 Polyclonal Antibody
Host Species	Rabbit
Clonality	Polyclonal
Isotype	IgG
Purification	Affinity purification
Applications	WB
Species Reactivity	Human,Mouse,Rat
Immunogen Description	Recombinant fusion protein of human ADAM22 (NP_004185.1).
Other Names	ADAM22; ADAM 22; MDC2; ADAM metallopeptidase domain 22
Accession No.	Swiss-Prot#:Q9P0K1NCBI Gene ID:53616
Uniprot	Q9P0K1
GeneID	53616;
Calculated MW	100kDa
Formulation	Avoid freeze / thaw cycles. Buffer: PBS with 50% glycerol, pH7.4.
Storage	Store at -20°C

Application Details

WB □ 1:1000 - 1:4000

Images



Western blot analysis of extracts of various cell lines, using ADAM22 at 1:1000 dilution.

Background

This gene encodes a member of the ADAM (a disintegrin and metalloprotease domain) family. Members of this family are membrane-anchored proteins structurally related to snake venom disintegrins, and have been implicated in a variety of biological processes involving cell-cell and cell-matrix interactions, including fertilization, muscle development, and neurogenesis. Unlike other members of the ADAM protein family, the protein encoded by this gene lacks metalloprotease activity since it has no zinc-binding motif. This gene is highly expressed in the brain and may function as

an integrin ligand in the brain. In mice, it has been shown to be essential for correct myelination in the peripheral nervous system. Alternative splicing results in several transcript variants.

Note: This product is for in vitro research use only