

## INF2 Polyclonal Antibody

Catalog No: #27268

Package Size: #27268-1 50ul #27268-2 100ul

Orders: [order@signalwayantibody.com](mailto:order@signalwayantibody.com)Support: [tech@signalwayantibody.com](mailto:tech@signalwayantibody.com)

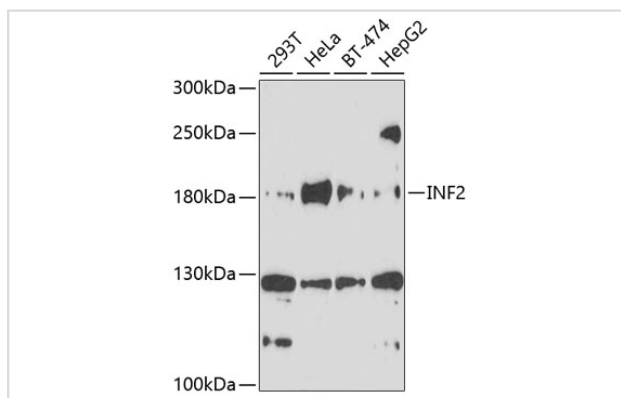
## Description

Product Name	INF2 Polyclonal Antibody
Host Species	Rabbit
Clonality	Polyclonal
Isotype	IgG
Purification	Affinity purification
Applications	WB
Species Reactivity	Human
Immunogen Description	Recombinant fusion protein of human INF2 (NP_116103.1).
Other Names	INF2; C14orf151; C14orf173; CMTDIE; FSGS5; pp9484; inverted formin-2
Accession No.	Swiss-Prot#:Q27J81NCBI Gene ID:64423
Uniprot	Q27J81
GeneID	64423;
Calculated MW	180kDa
Formulation	Avoid freeze / thaw cycles. Buffer: PBS with 50% glycerol, pH7.4.
Storage	Store at -20°C

## Application Details

WB □ 1:500 - 1:1000

## Images



Western blot analysis of extracts of various cell lines, using INF2 at 1:1000 dilution.

## Background

This gene represents a member of the formin family of proteins. It is considered a diaphanous formin due to the presence of a diaphanous inhibitory domain located at the N-terminus of the encoded protein. Studies of a similar mouse protein indicate that the protein encoded by this locus may function in polymerization and depolymerization of actin filaments. Mutations at this locus have been associated with focal segmental glomerulosclerosis 5.

---

Note: This product is for in vitro research use only