

## TBL3 Polyclonal Antibody

Catalog No: #27270

Package Size: #27270-1 50ul #27270-2 100ul

Orders: order@signalwayantibody.com

Support: tech@signalwayantibody.com

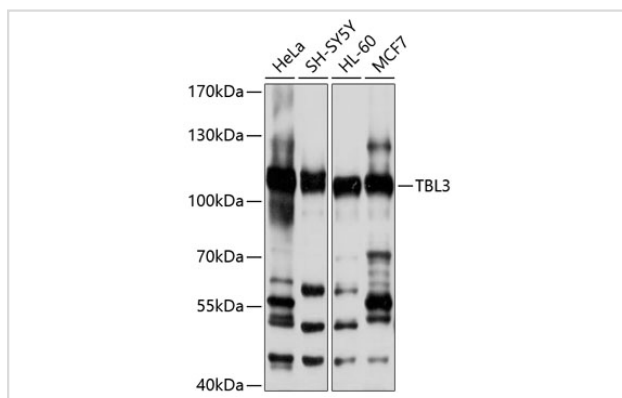
## Description

Product Name	TBL3 Polyclonal Antibody
Host Species	Rabbit
Clonality	Polyclonal
Isotype	IgG
Purification	Affinity purification
Applications	WB
Species Reactivity	Human,Mouse
Immunogen Description	Recombinant fusion protein of human TBL3 (NP_006444.2).
Other Names	TBL3; SAZD; UTP13; transducin beta like 3
Accession No.	Swiss-Prot#:Q12788NCBI Gene ID:10607
Uniprot	Q12788
GeneID	10607;
Calculated MW	110kDa
Formulation	Avoid freeze / thaw cycles. Buffer: PBS with 50% glycerol, pH7.4.
Storage	Store at -20°C

## Application Details

WB □ 1:1000 - 1:4000

## Images



Western blot analysis of extracts of various cell lines, using TBL3 at 1:1000 dilution.

## Background

The protein encoded by this gene has sequence similarity with members of the WD40 repeat-containing protein family. The WD40 group is a large family of proteins, which appear to have a regulatory function. It is believed that the WD40 repeats mediate protein-protein interactions and members of the family are involved in signal transduction, RNA processing, gene regulation, vesicular trafficking, cytoskeletal assembly and may play a role in the control of cytotypic differentiation. This gene has multiple polyadenylation sites. It might have multiple alternatively spliced transcript variants but

the variants have not been fully described yet.

---

Note: This product is for in vitro research use only