

## IL36R Polyclonal Antibody

Catalog No: #27288

Package Size: #27288-1 50ul #27288-2 100ul

Orders: order@signalwayantibody.com

Support: tech@signalwayantibody.com

## Description

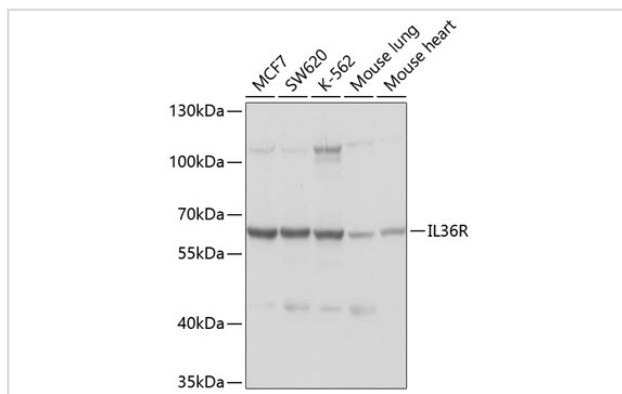
Product Name	IL36R Polyclonal Antibody
Host Species	Rabbit
Clonality	Polyclonal
Isotype	IgG
Purification	Affinity purification
Applications	WB,IF
Species Reactivity	Human,Mouse,Rat
Immunogen Description	Recombinant fusion protein of human IL36R (NP_003845.2).
Other Names	IL1RL2;IL-1Rrp2;IL-36R;IL1R-rp2;IL1RRP2;IL36R
Accession No.	Uniprot:Q9HB29GeneID:8808
Uniprot	Q9HB29
GeneID	8808
Calculated MW	65kDa
SDS-PAGE MW	65kDa
Concentration	0.32 mg/mL
Formulation	PBS with 0.02% sodium azide,50% glycerol,pH7.3.
Storage	Store at -20°C. Avoid freeze / thaw cycles.

## Application Details

WB □ 1:500 - 1:2000

IF □ 1:50 - 1:200

## Images



Western blot analysis of extracts of various cell lines, using IL1RL2 antibody.

## Background

The protein encoded by this gene is a member of the interleukin 1 receptor family. An experiment with transient gene expression demonstrated that

this receptor was incapable of binding to interleukin 1 alpha and interleukin 1 beta with high affinity. This gene and four other interleukin 1 receptor family genes, including interleukin 1 receptor, type I (IL1R1), interleukin 1 receptor, type II (IL1R2), interleukin 1 receptor-like 1 (IL1RL1), and interleukin 18 receptor 1 (IL18R1), form a cytokine receptor gene cluster in a region mapped to chromosome 2q12.

---

Note: This product is for in vitro research use only