

## ART1 Polyclonal Antibody

Catalog No: #27290

Package Size: #27290-1 50ul #27290-2 100ul

Orders: order@signalwayantibody.com

Support: tech@signalwayantibody.com

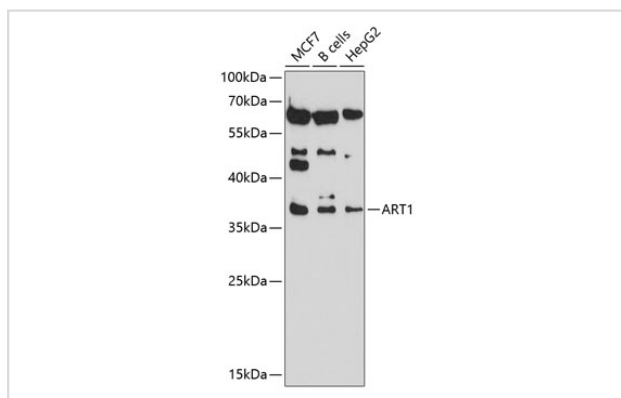
## Description

Product Name	ART1 Polyclonal Antibody
Host Species	Rabbit
Clonality	Polyclonal
Isotype	IgG
Purification	Affinity purification
Applications	WB,IHC,IF
Species Reactivity	Human,Mouse
Immunogen Description	Recombinant fusion protein of human ART1 (NP_004305.2).
Other Names	ART1; ART2; ARTC1; CD296; RT6; ADP-ribosyltransferase 1
Accession No.	Swiss-Prot#:P52961NCBI Gene ID:417
Uniprot	P52961
GeneID	417;
Calculated MW	36kDa
Formulation	Avoid freeze / thaw cycles. Buffer: PBS with 50% glycerol, pH7.4.
Storage	Store at -20°C

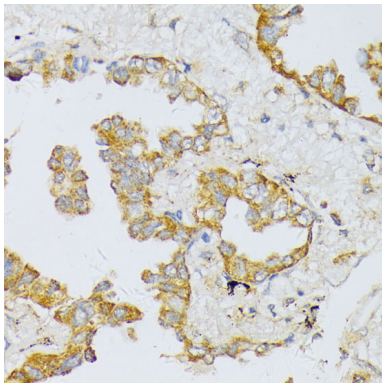
## Application Details

WB □ 1:500 - 1:2000 IHC □ 1:50 - 1:200 IF □ 1:50 - 1:200

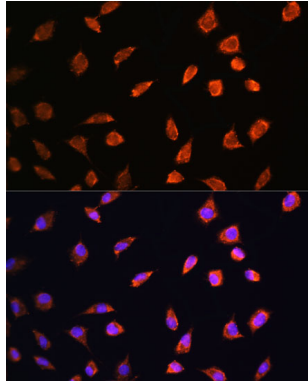
## Images



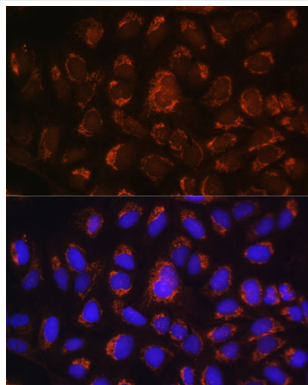
Western blot analysis of extracts of various cell lines, using ART1 at 1:1000 dilution.



Immunohistochemistry of paraffin-embedded human lung cancer using ART1 at dilution of 1:100 (40x lens).



Immunofluorescence analysis of L929 cells using ART1 at dilution of 1:100. Blue: DAPI for nuclear staining.



Immunofluorescence analysis of U-2 OS cells using ART1 at dilution of 1:100. Blue: DAPI for nuclear staining.

## Background

ADP-ribosyltransferase catalyzes the ADP-ribosylation of arginine residues in proteins. Mono-ADP-ribosylation is a posttranslational modification of proteins that is interfered with by a variety of bacterial toxins including cholera, pertussis, and heat-labile enterotoxins of *E. coli*. The amino acid sequence consists of predominantly hydrophobic N- and C-terminal regions, which is characteristic of glycosylphosphatidylinositol (GPI)-anchored proteins. This gene was previously designated ART2.

Note: This product is for in vitro research use only