

## ZCCHC4 Polyclonal Antibody

Catalog No: #27306

Package Size: #27306-1 50ul #27306-2 100ul

Orders: order@signalwayantibody.com

Support: tech@signalwayantibody.com

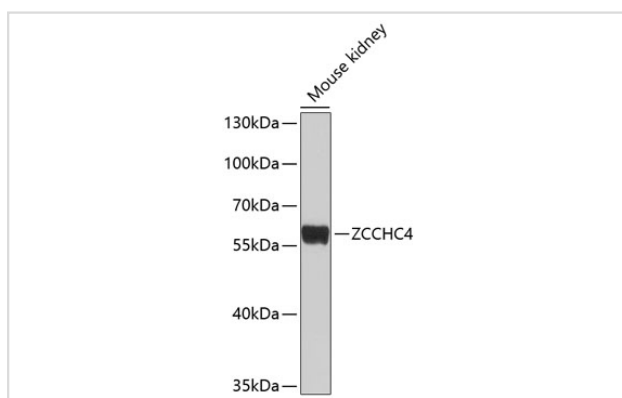
## Description

Product Name	ZCCHC4 Polyclonal Antibody
Host Species	Rabbit
Clonality	Polyclonal
Isotype	IgG
Purification	Affinity purification
Applications	WB
Species Reactivity	Mouse
Immunogen Description	Recombinant fusion protein of human ZCCHC4 (NP_079212.2).
Other Names	ZCCHC4; HSPC052; ZGRF4; zinc finger CCHC-type containing 4
Accession No.	Swiss-Prot#:Q9H5U6NCBI Gene ID:29063
Uniprot	Q9H5U6
GeneID	29063;
Calculated MW	59kDa
Formulation	Avoid freeze / thaw cycles.   Buffer: PBS with 50% glycerol, pH7.4.
Storage	Store at -20°C

## Application Details

WB □ 1:500 - 1:2000

## Images



Western blot analysis of extracts of mouse kidney, using ZCCHC4 at 1:1000 dilution.

## Background

---

Note: This product is for in vitro research use only