

## ERVFRD-1 Polyclonal Antibody

Catalog No: #27316

Package Size: #27316-1 50ul #27316-2 100ul

Orders: order@signalwayantibody.com

Support: tech@signalwayantibody.com

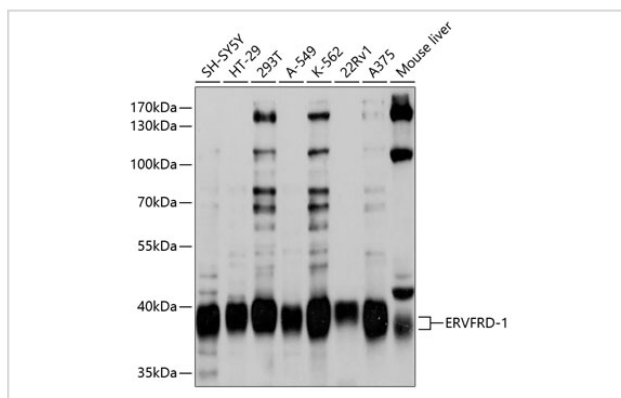
## Description

Product Name	ERVFRD-1 Polyclonal Antibody
Host Species	Rabbit
Clonality	Polyclonal
Isotype	IgG
Purification	Affinity purification
Applications	WB
Species Reactivity	Human,Mouse,Rat
Immunogen Description	Recombinant fusion protein of human ERVFRD-1 (NP_997465.1).
Other Names	ERVFRD-1; ERVFRDE1; GLLL6191; HERV-FRD; HERV-W/FRD; UNQ6191; envFRD; syncytin-2
Accession No.	Swiss-Prot#:P60508NCBI Gene ID:405754
Uniprot	P60508
GeneID	405754;
Calculated MW	38kDa
Formulation	Avoid freeze / thaw cycles. Buffer: PBS with 50% glycerol, pH7.4.
Storage	Store at -20°C

## Application Details

WB □ 1:1000 - 1:4000

## Images



Western blot analysis of extracts of various cell lines, using ERVFRD-1 at 1:1000 dilution.

## Background

Many different human endogenous retrovirus (HERV) families are expressed in normal placental tissue at high levels, suggesting that HERVs are functionally important in reproduction. This gene is part of a human endogenous retrovirus provirus on chromosome 6 that has inactivating mutations in the gag and pol genes. This gene is the envelope glycoprotein gene which appears to have been selectively preserved. The gene's protein product plays a major role in placental development and trophoblast fusion. The protein has the characteristics of a typical retroviral envelope protein, including

a cleavage site that separates the surface (SU) and transmembrane (TM) proteins which form a heterodimer.

---

Note: This product is for in vitro research use only