

MAN2A1 Polyclonal Antibody

Catalog No: #27335

Package Size: #27335-1 50ul #27335-2 100ul

Orders: order@signalwayantibody.com

Support: tech@signalwayantibody.com

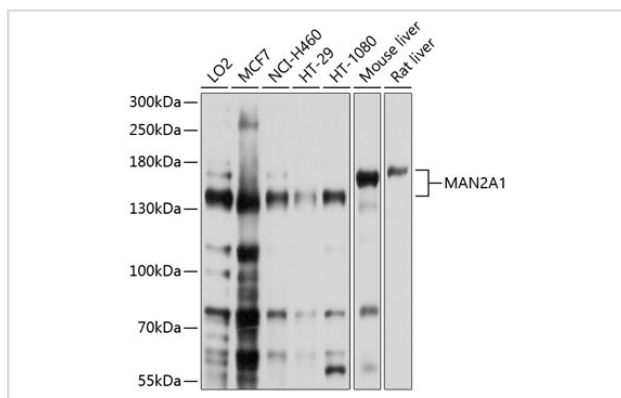
Description

Product Name	MAN2A1 Polyclonal Antibody
Host Species	Rabbit
Clonality	Polyclonal
Isotype	IgG
Purification	Affinity purification
Applications	WB
Species Reactivity	Human,Mouse,Rat
Immunogen Description	Recombinant fusion protein of human MAN2A1 (NP_002363.2).
Other Names	MAN2A1; AMan II; GOLIM7; MANA2; MANII; AManII; alpha-mannosidase 2
Accession No.	Swiss-Prot#:Q16706NCBI Gene ID:4124
Uniprot	Q16706
GeneID	4124;
Calculated MW	131-170kDa
Formulation	Avoid freeze / thaw cycles. Buffer: PBS with 50% glycerol, pH7.4.
Storage	Store at -20°C

Application Details

WB □ 1:1000 - 1:2000

Images



Western blot analysis of extracts of various cell lines, using MAN2A1 at 1:1000 dilution.

Background

This gene encodes a glycosyl hydrolase that localizes to the Golgi and catalyzes the final hydrolytic step in the asparagine-linked oligosaccharide (N-glycan) maturation pathway. Mutations in the mouse homolog of this gene have been shown to cause a systemic autoimmune disease similar to human systemic lupus erythematosus.

Note: This product is for in vitro research use only