

XPNPEP2 Polyclonal Antibody

Catalog No: #27346

Package Size: #27346-1 50ul #27346-2 100ul

Orders: order@signalwayantibody.com

Support: tech@signalwayantibody.com

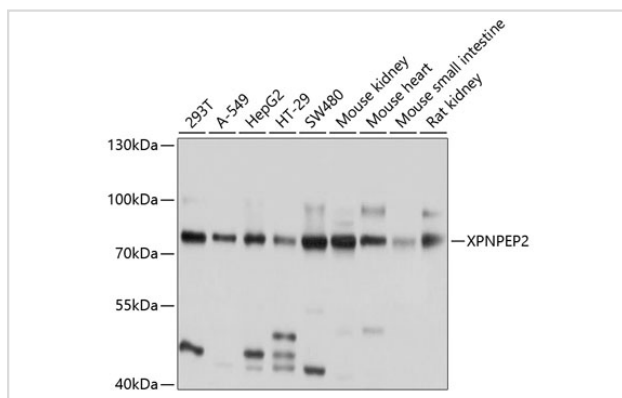
Description

Product Name	XPNPEP2 Polyclonal Antibody
Host Species	Rabbit
Clonality	Polyclonal
Isotype	IgG
Purification	Affinity purification
Applications	WB
Species Reactivity	Human,Mouse,Rat
Immunogen Description	Recombinant fusion protein of human XPNPEP2 (NP_003390.4).
Other Names	XPNPEP2; AEACEI; APP2; xaa-Pro aminopeptidase 2
Accession No.	Swiss-Prot#:O43895NCBI Gene ID:7512
Uniprot	O43895
GeneID	7512;
Calculated MW	76kDa
Formulation	Avoid freeze / thaw cycles. Buffer: PBS with 50% glycerol, pH7.4.
Storage	Store at -20°C

Application Details

WB □ 1:1000 - 1:2000

Images



Western blot analysis of extracts of various cell lines, using XPNPEP2 at 1:1000 dilution.

Background

Aminopeptidase P is a hydrolase specific for N-terminal imido bonds, which are common to several collagen degradation products, neuropeptides, vasoactive peptides, and cytokines. Structurally, the enzyme is a member of the 'pita bread fold' family and occurs in mammalian tissues in both soluble and GPI-anchored membrane-bound forms. A membrane-bound and soluble form of this enzyme have been identified as products of two separate genes.

Note: This product is for in vitro research use only