

LUC7L3 Antibody

Catalog No: #45886

Package Size: #45886-1 50ul #45886-2 100ul

Orders: order@signalwayantibody.com

Support: tech@signalwayantibody.com

Description

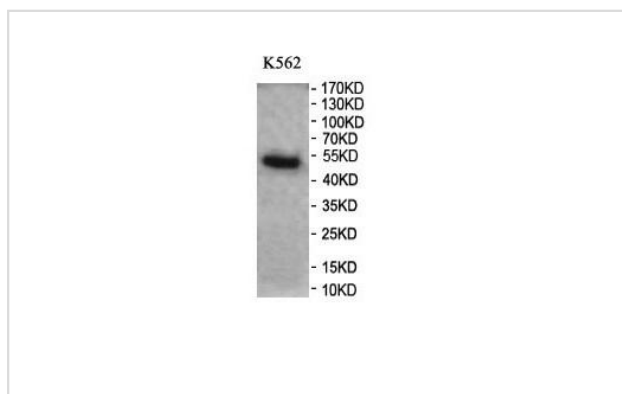
Product Name	LUC7L3 Antibody
Host Species	Rabbit
Clonality	Polyclonal
Purification	Purified by antigen affinity column
Applications	WB, IHC
Species Reactivity	Human. Predicted: Rat, Ms
Specificity	LUC7L3 Antibody detects endogenous levels of total LUC7L3
Immunogen Type	Peptide
Immunogen Description	Recombinant fragment of human LUC7L3 protein
Target Name	LUC7L3
Other Names	LUC7L3, CRA, CRE-associated protein 1, CREAP-1, CROP, HLuc7A, Luc7-like protein 3, LUC7-like 3 (S. cerevisiae), LUC7A, O48, OA48-18, CREAP1
Accession No.	Swiss-Prot#: O95232NCBI Gene ID:51747
Uniprot	O95232
GeneID	51747;
Calculated MW	51 kDa
Concentration	1.0mg/mL
Formulation	Lyophilized powder with 0.02% NaN ₃ /Reconstitute in 100µL of sterile H ₂ O with 50% glycerol
Storage	Shipped at ambient temperature or with ice bags if in liquid. Store immediately at -20°C upon receipt. Avoid repeating freeze-thaw cycles

Application Details

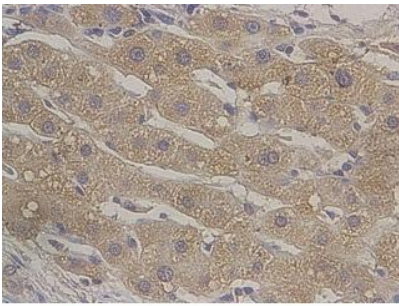
WBoO 1:500-1:2,000

IHCco 1:100-1:200

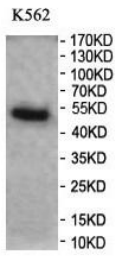
Images



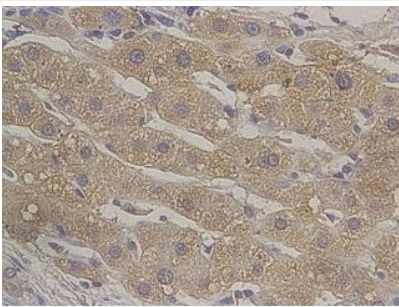
Western blot analysis of K562.



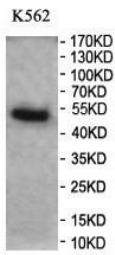
Immunohistochemical staining of formalin-fixed paraffin-embedded human liver staining



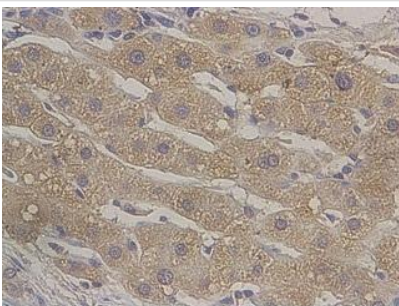
Western blot analysis of K562.



Immunohistochemical staining of formalin-fixed paraffin-embedded human liver staining

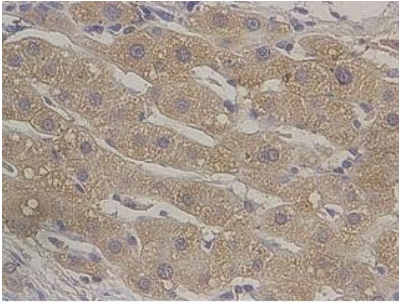
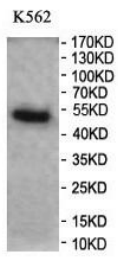


Western blot analysis of K562.



Immunohistochemical staining of formalin-fixed paraffin-embedded human liver staining

Western blot analysis of K562.



Immunohistochemical staining of formalin-fixed paraffin-embedded human liver staining

Note: This product is for in vitro research use only