

KIF16B Polyclonal Antibody

Catalog No: #27366

Package Size: #27366-1 50ul #27366-2 100ul

Orders: order@signalwayantibody.comSupport: tech@signalwayantibody.com

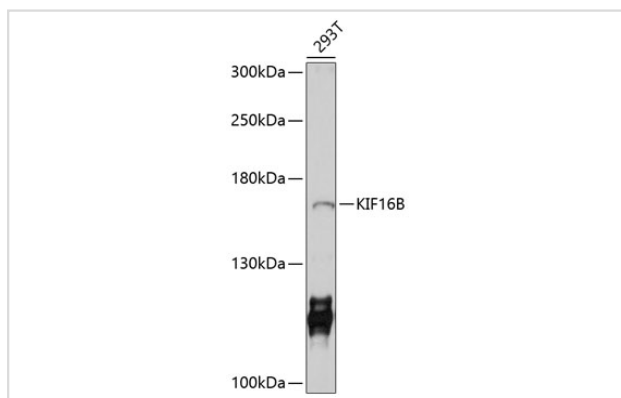
Description

| | |
|-----------------------|---|
| Product Name | KIF16B Polyclonal Antibody |
| Host Species | Rabbit |
| Clonality | Polyclonal |
| Isotype | IgG |
| Purification | Affinity purification |
| Applications | WB |
| Species Reactivity | Human |
| Immunogen Description | Recombinant fusion protein of human KIF16B (NP_078980.3). |
| Other Names | KIF16B; C20orf23; KISC20ORF; SNX23; kinesin family member 16B |
| Accession No. | Swiss-Prot#:Q96L93NCBI Gene ID:55614 |
| Uniprot | Q96L93 |
| GeneID | 55614; |
| Calculated MW | 160kDa |
| Formulation | Avoid freeze / thaw cycles. Buffer: PBS with 50% glycerol, pH7.4. |
| Storage | Store at -20°C |

Application Details

WB □ 1:200 - 1:2000

Images



Western blot analysis of extracts of 293T cells, using KIF16B at 1:1000 dilution.

Background

The protein encoded by this gene is a kinesin-like protein that may be involved in intracellular trafficking. Three transcript variants encoding different isoforms have been found for this gene.

Note: This product is for in vitro research use only