

SLC28A3 Polyclonal Antibody

Catalog No: #27371

Package Size: #27371-1 50ul #27371-2 100ul

Orders: order@signalwayantibody.comSupport: tech@signalwayantibody.com

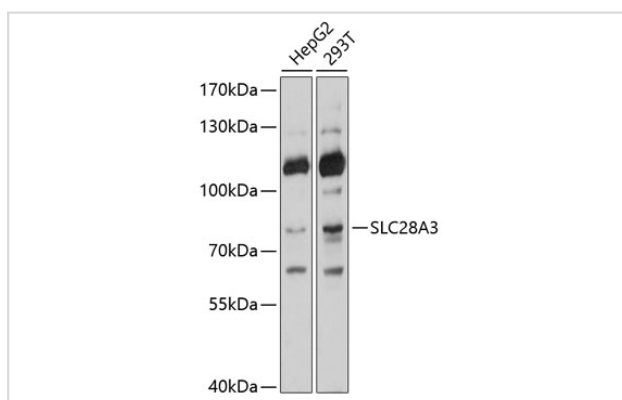
Description

Product Name	SLC28A3 Polyclonal Antibody
Host Species	Rabbit
Clonality	Polyclonal
Isotype	IgG
Purification	Affinity purification
Applications	WB
Species Reactivity	Human,Mouse
Immunogen Description	Recombinant fusion protein of human SLC28A3 (NP_071410.1).
Other Names	SLC28A3; CNT3; solute carrier family 28 member 3
Accession No.	Swiss-Prot#:Q9HAS3NCBI Gene ID:64078
Uniprot	Q9HAS3
GeneID	64078;
Calculated MW	77kDa
Formulation	Avoid freeze / thaw cycles. Buffer: PBS with 50% glycerol, pH7.4.
Storage	Store at -20°C

Application Details

WB □ 1:500 - 1:2000

Images



Western blot analysis of extracts of various cell lines, using SLC28A3 at 1:1000 dilution.

Background

Note: This product is for in vitro research use only