

SLAMF6 Polyclonal Antibody

Catalog No: #27384

Package Size: #27384-1 50ul #27384-2 100ul

Orders: order@signalwayantibody.comSupport: tech@signalwayantibody.com

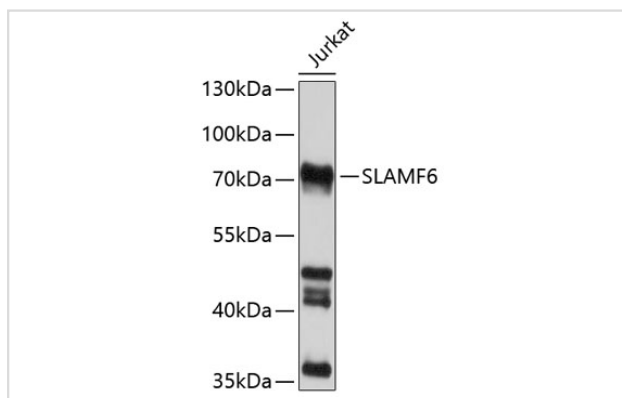
Description

Product Name	SLAMF6 Polyclonal Antibody
Host Species	Rabbit
Clonality	Polyclonal
Isotype	IgG
Purification	Affinity purification
Applications	WB
Species Reactivity	Human,Mouse,Rat
Immunogen Description	Recombinant protein of human SLAMF6
Other Names	SLAMF6; CD352; KALI; KAL1b; Ly108; NTB-A; NTBA; SF2000; SLAM family member 6
Accession No.	Swiss-Prot#:Q96DU3NCBI Gene ID:114836
Uniprot	Q96DU3
GeneID	114836;
Calculated MW	70kDa
Formulation	Avoid freeze / thaw cycles. Buffer: PBS with 50% glycerol, pH7.4.
Storage	Store at -20°C

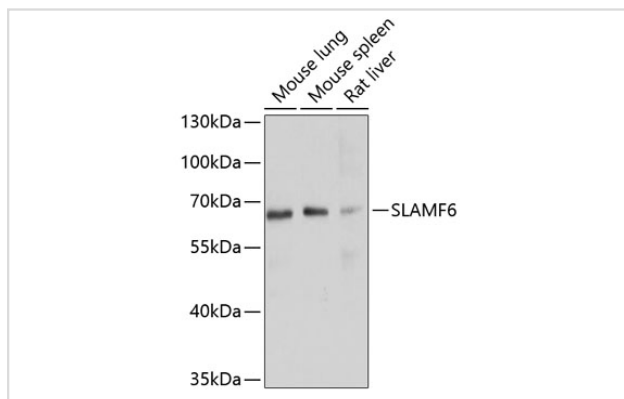
Application Details

WB □ 1:500 - 1:2000

Images



Western blot analysis of extracts of Jurkat cells, using SLAMF6 at 1:1000 dilution.



Western blot analysis of extracts of various cell lines, using SLAMF6 at 1:1000 dilution.

Background

The protein encoded by this gene is a type I transmembrane protein, belonging to the CD2 subfamily of the immunoglobulin superfamily. This encoded protein is expressed on Natural killer (NK), T, and B lymphocytes. It undergoes tyrosine phosphorylation and associates with the Src homology 2 domain-containing protein (SH2D1A) as well as with SH2 domain-containing phosphatases (SHPs). It functions as a coreceptor in the process of NK cell activation. It can also mediate inhibitory signals in NK cells from X-linked lymphoproliferative patients. Alternative splicing results in multiple transcript variants encoding distinct isoforms.

Note: This product is for in vitro research use only