

IMPA2 Polyclonal Antibody

Catalog No: #27401

Package Size: #27401-1 50ul #27401-2 100ul

Orders: order@signalwayantibody.comSupport: tech@signalwayantibody.com

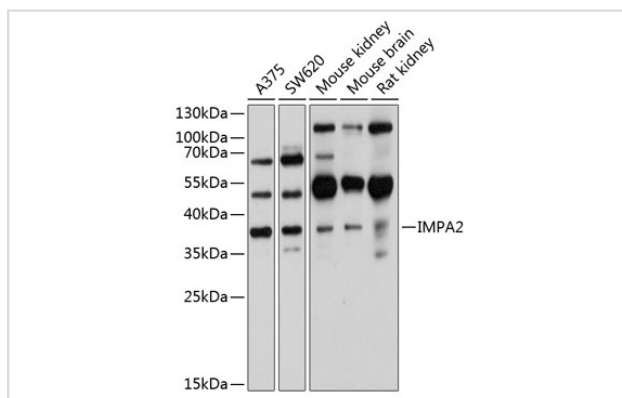
Description

Product Name	IMPA2 Polyclonal Antibody
Host Species	Rabbit
Clonality	Polyclonal
Isotype	IgG
Purification	Affinity purification
Applications	WB,IF
Species Reactivity	Human,Mouse,Rat
Immunogen Description	Recombinant fusion protein of human IMPA2 (NP_055029.1).
Other Names	IMPA2; inositol monophosphatase 2
Accession No.	Swiss-Prot#:O14732NCBI Gene ID:3613
Uniprot	O14732
GeneID	3613;
Calculated MW	37kDa
Formulation	Avoid freeze / thaw cycles. Buffer: PBS with 50% glycerol, pH7.4.
Storage	Store at -20°C

Application Details

WB □ 1:500 - 1:2000 IF □ 1:50 - 1:200

Images



Western blot analysis of extracts of various cell lines, using IMPA2 at 1:1000 dilution.

Background

This locus encodes an inositol monophosphatase. The encoded protein catalyzes the dephosphorylation of inositol monophosphate and plays an important role in phosphatidylinositol signaling. This locus may be associated with susceptibility to bipolar disorder.

Note: This product is for in vitro research use only