

ITM2A Polyclonal Antibody

Catalog No: #27410

Package Size: #27410-1 50ul #27410-2 100ul

Orders: order@signalwayantibody.com

Support: tech@signalwayantibody.com

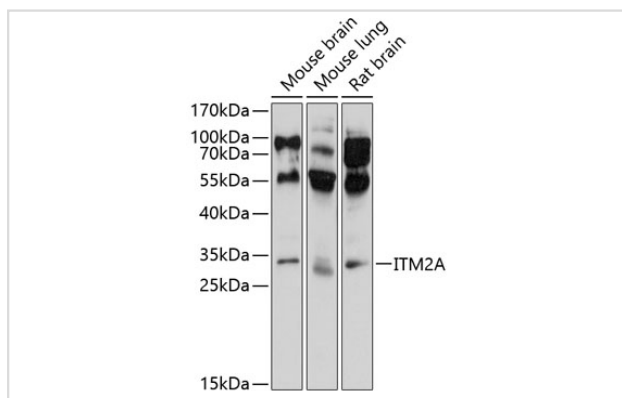
Description

Product Name	ITM2A Polyclonal Antibody
Host Species	Rabbit
Clonality	Polyclonal
Isotype	IgG
Purification	Affinity purification
Applications	WB
Species Reactivity	Mouse,Rat
Immunogen Description	Recombinant fusion protein of human ITM2A (NP_004858.1).
Other Names	ITM2A; BRICD2A; E25A; integral membrane protein 2A
Accession No.	Swiss-Prot#:O43736NCBI Gene ID:9452
Uniprot	O43736
GeneID	9452;
Calculated MW	30kDa
Formulation	Avoid freeze / thaw cycles. Buffer: PBS with 50% glycerol, pH7.4.
Storage	Store at -20°C

Application Details

WB □ 1:500 - 1:2000

Images



Western blot analysis of extracts of various cell lines, using ITM2A at 1:1000 dilution.

Background

This gene encodes a type II membrane protein that belongs to the ITM2 family. Studies in mouse suggest that it may be involved in osteo- and chondrogenic differentiation. Alternatively spliced transcript variants encoding different isoforms have been found for this gene.

Note: This product is for in vitro research use only