

## SLC44A4 Polyclonal Antibody

Catalog No: #27438

Package Size: #27438-1 50ul #27438-2 100ul

Orders: order@signalwayantibody.com

Support: tech@signalwayantibody.com

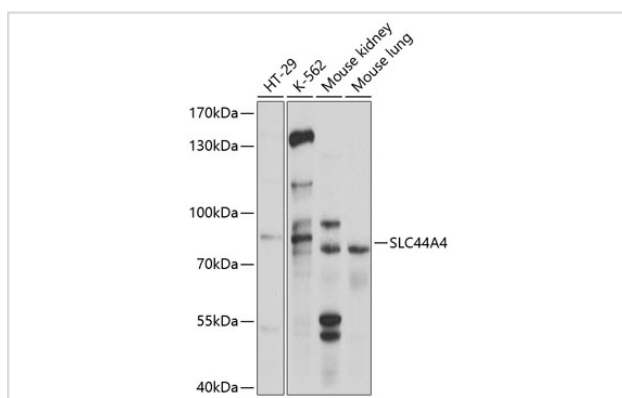
## Description

Product Name	SLC44A4 Polyclonal Antibody
Host Species	Rabbit
Clonality	Polyclonal
Isotype	IgG
Purification	Affinity purification
Applications	WB
Species Reactivity	Human,Mouse
Immunogen Description	Recombinant fusion protein of human SLC44A4 (NP_079533.2).
Other Names	SLC44A4; C6orf29; CTL4; NG22; TPPT; solute carrier family 44 member 4
Accession No.	Swiss-Prot#:Q53GD3NCBI Gene ID:80736
Uniprot	Q53GD3
GeneID	80736;
Calculated MW	79kDa
Formulation	Avoid freeze / thaw cycles. Buffer: PBS with 50% glycerol, pH7.4.
Storage	Store at -20°C

## Application Details

WB □ 1:500 - 1:2000

## Images



Western blot analysis of extracts of various cell lines, using SLC44A4 at 1:1000 dilution.

## Background

The protein encoded by this gene may be a sodium-dependent transmembrane transport protein involved in the uptake of choline by cholinergic neurons. Defects in this gene can cause sialidosis, a lysosomal storage disease. Three transcript variants encoding different isoforms have been found for this gene.

---

Note: This product is for in vitro research use only