

CCDC109A Antibody

Catalog No: #45898

Package Size: #45898-1 50ul #45898-2 100ul

Orders: order@signalwayantibody.com

Support: tech@signalwayantibody.com

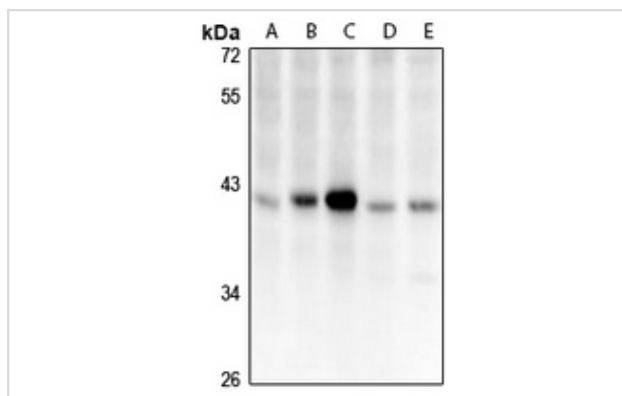
Description

Product Name	CCDC109A Antibody
Host Species	Rabbit
Clonality	Polyclonal
Purification	Immunogen affinity purified
Applications	WB, IH
Species Reactivity	Hu Ms
Specificity	CCDC109A Antibody detects endogenous levels of total CCDC109A
Immunogen Type	Peptide
Immunogen Description	A synthesized peptide derived from human CCDC109A
Target Name	CCDC109A
Other Names	C10orf42, CCDC109A,MCU
Accession No.	Swiss-Prot#: Q8NE86NCBI Gene ID:90550
Uniprot	Q8NE86
GeneID	90550;
Calculated MW	40 kDa
Concentration	1.0mg/mL
Formulation	Liquid in 0.42% Potassium phosphate, 0.87% Sodium chloride, pH 7.3, 30% glycerol, and 0.01% sodium azide.
Storage	Store at -20°C

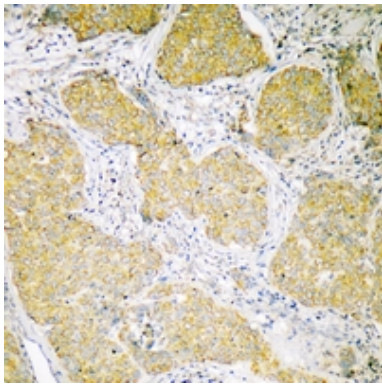
Application Details

WB (1/500 - 1/1000), IH (1/50 - 1/200)

Images



Western blot analysis of CCDC109A expression in BV2 (A), PC12 (B), HCT116 (C), HEK293T (D), Panc1 (E) whole cell lysates.



Immunohistochemical analysis of CCDC109A staining in human breast cancer formalin fixed paraffin embedded tissue section. The section was pre-treated using heat mediated antigen retrieval with sodium citrate buffer (pH 6.0). The section was then incubated with the antibody at room temperature and detected using an HRP conjugated compact polymer system. DAB was used as the chromogen. The section was then counterstained with haematoxylin and mounted with DPX.

Note: This product is for in vitro research use only