

GPHA2 Polyclonal Antibody

Catalog No: #27486

Package Size: #27486-1 50ul #27486-2 100ul

Orders: order@signalwayantibody.comSupport: tech@signalwayantibody.com

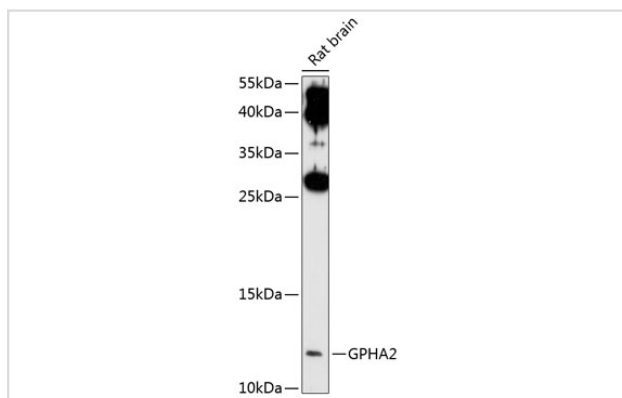
Description

Product Name	GPHA2 Polyclonal Antibody
Host Species	Rabbit
Clonality	Polyclonal
Isotype	IgG
Purification	Affinity purification
Applications	WB
Species Reactivity	Rat
Immunogen Description	Recombinant fusion protein of human GPHA2 (NP_570125.1).
Other Names	GPHA2; A2; GPA2; ZSIG51; glycoprotein hormone alpha-2
Accession No.	Swiss-Prot#:Q96T91NCBI Gene ID:170589
Uniprot	Q96T91
GeneID	170589;
Calculated MW	14kDa
Formulation	Avoid freeze / thaw cycles. Buffer: PBS with 50% glycerol, pH7.4.
Storage	Store at -20°C

Application Details

WB □ 1:500 - 1:1000

Images



Western blot analysis of extracts of rat brain, using GPHA2 at 1:1000 dilution.

Background

Note: This product is for in vitro research use only