

FBXO6 Polyclonal Antibody

Catalog No: #27489

Package Size: #27489-1 50ul #27489-2 100ul

Orders: order@signalwayantibody.comSupport: tech@signalwayantibody.com

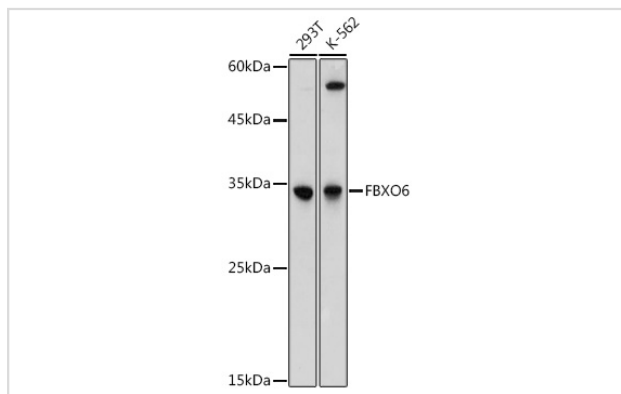
Description

Product Name	FBXO6 Polyclonal Antibody
Host Species	Rabbit
Clonality	Polyclonal
Isotype	IgG
Purification	Affinity purification
Applications	WB,IF
Species Reactivity	Human,Mouse
Immunogen Description	Recombinant fusion protein of human FBXO6 (NP_060908.1).
Other Names	FBXO6;FBG2;FBS2;FBX6;Fbx6b
Accession No.	Uniprot:Q9NRD1GeneID:26270
Uniprot	Q9NRD1
GeneID	26270
Calculated MW	Refer to figures
SDS-PAGE MW	34KDa
Formulation	PBS with 0.02% sodium azide,50% glycerol,pH7.3.
Storage	Store at -20°C. Avoid freeze / thaw cycles.

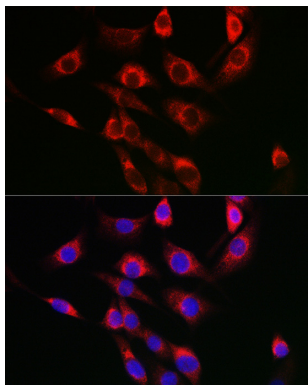
Application Details

WB □ 1:500 - 1:2000 IF □ 1:50 - 1:200

Images



Western blot analysis of extracts of various cell lines, using FBXO6 antibody.



Immunofluorescence analysis of NIH/3T3 cells using FBXO6 Rabbit pAb.

Background

This gene encodes a member of the F-box protein family which is characterized by an approximately 40 amino acid motif, the F-box. The F-box proteins constitute one of the four subunits of the ubiquitin protein ligase complex called SCFs (SKP1-cullin-F-box), which function in phosphorylation-dependent ubiquitination. The F-box proteins are divided into 3 classes: Fbws containing WD-40 domains, Fbls containing leucine-rich repeats, and Fbxs containing either different protein-protein interaction modules or no recognizable motifs. The protein encoded by this gene belongs to the Fbxs class, and its C-terminal region is highly similar to that of rat NFB42 (neural F Box 42 kDa) which may be involved in the control of the cell cycle.

Note: This product is for in vitro research use only