

SEC24C Polyclonal Antibody

Catalog No: #27501



Package Size: #27501-1 50ul #27501-2 100ul

Orders: order@signalwayantibody.com
Support: tech@signalwayantibody.com

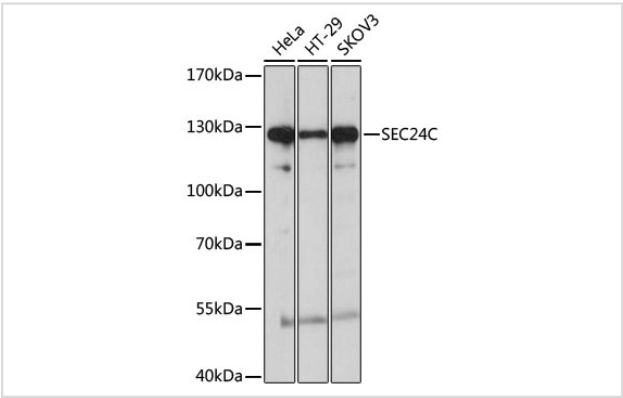
Description

Product Name	SEC24C Polyclonal Antibody
Host Species	Rabbit
Clonality	Polyclonal
Isotype	IgG
Purification	Affinity purification
Applications	WB
Species Reactivity	Human
Immunogen Description	Recombinant fusion protein of human SEC24C (NP_004913.2).
Other Names	SEC24C; protein transport protein Sec24C
Accession No.	Swiss-Prot#:P53992NCBI Gene ID:9632
Uniprot	P53992
GeneID	9632;
Calculated MW	118kDa
Formulation	Avoid freeze / thaw cycles. Buffer: PBS with 50% glycerol, pH7.4.
Storage	Store at -20°C

Application Details

WB 1:500 - 1:2000

Images



Western blot analysis of extracts of various cell lines, using SEC24C at 1:1000 dilution.

Background

The protein encoded by this gene is a member of the SEC24 subfamily of the SEC23/SEC24 family, which is involved in vesicle trafficking. The encoded protein has similarity to yeast Sec24p component of COPII. COPII is the coat protein complex responsible for vesicle budding from the ER. The product of this gene may play a role in shaping the vesicle, as well as in cargo selection and concentration. Alternatively spliced transcript variants encoding the same protein have been identified.

Note: This product is for in vitro research use only