

## MYT1 Polyclonal Antibody

Catalog No: #27505

Package Size: #27505-1 50ul #27505-2 100ul

Orders: order@signalwayantibody.com

Support: tech@signalwayantibody.com

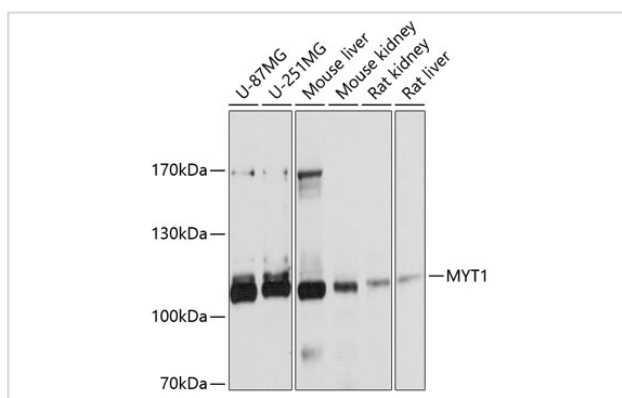
## Description

Product Name	MYT1 Polyclonal Antibody
Host Species	Rabbit
Clonality	Polyclonal
Isotype	IgG
Purification	Affinity purification
Applications	WB
Species Reactivity	Human,Mouse,Rat
Immunogen Description	Recombinant fusion protein of human MYT1 (NP_004526.1).
Other Names	MYT1; C20orf36; MTF1; MYT1; NZF2; PLPB1; ZC2H2C1; ZC2HC4A; myelin transcription factor 1
Accession No.	Swiss-Prot#:Q01538NCBI Gene ID:4661
Uniprot	Q01538
GeneID	4661;
Calculated MW	122kDa
Formulation	Avoid freeze / thaw cycles. Buffer: PBS with 50% glycerol, pH7.4.
Storage	Store at -20°C

## Application Details

WB □ 1:500 - 1:2000

## Images



Western blot analysis of extracts of various cell lines, using MYT1 at 1:1000 dilution.

## Background

The protein encoded by this gene is a member of a family of neural specific, zinc finger-containing DNA-binding proteins. The protein binds to the promoter regions of proteolipid proteins of the central nervous system and plays a role in the developing nervous system.

---

Note: This product is for in vitro research use only