

## LYZ Polyclonal Antibody

Catalog No: #27511

Package Size: #27511-1 50ul #27511-2 100ul

Orders: [order@signalwayantibody.com](mailto:order@signalwayantibody.com)Support: [tech@signalwayantibody.com](mailto:tech@signalwayantibody.com)

## Description

Product Name	LYZ Polyclonal Antibody
Host Species	Rabbit
Clonality	Polyclonal
Isotype	IgG
Purification	Affinity purification
Applications	WB,IHC
Species Reactivity	Human,Mouse
Immunogen Description	Recombinant protein of human LYZ
Other Names	LYZ; LYZF1; LZM; lysozyme
Accession No.	Swiss-Prot#:P61626NCBI Gene ID:4069
Uniprot	P61626
GeneID	4069;
Calculated MW	14kDa
Formulation	Avoid freeze / thaw cycles. Buffer: PBS with 50% glycerol, pH7.4.
Storage	Store at -20°C

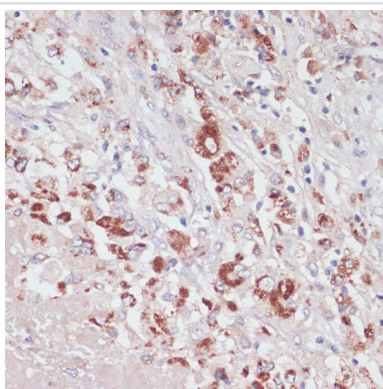
## Application Details

WB□1:500 - 1:2000

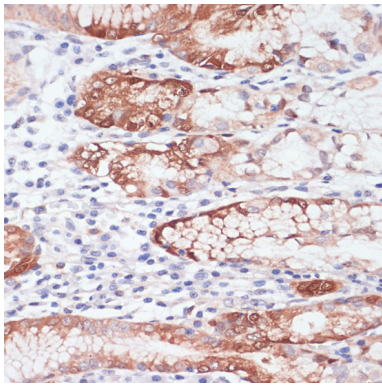
IHC□1:50 - 1:200

IF□1:50 - 1:200

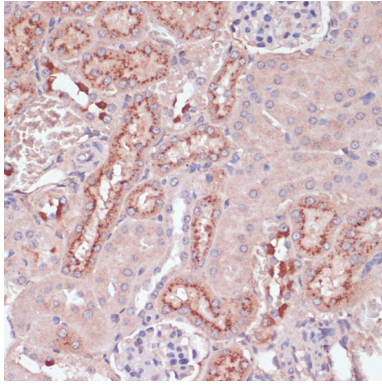
## Images



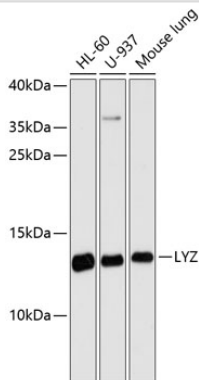
Immunohistochemistry of paraffin-embedded human liver cancer using LYZ at dilution of 1:100 (40x lens).



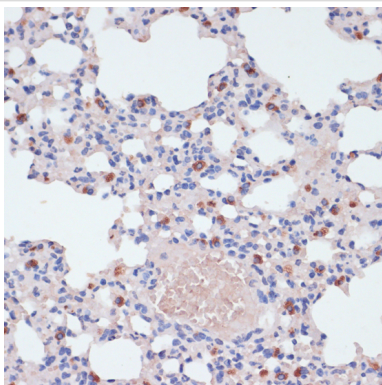
Immunohistochemistry of paraffin-embedded human stomach using LYZ at dilution of 1:100 (40x lens).



Immunohistochemistry of paraffin-embedded mouse kidney using LYZ at dilution of 1:100 (40x lens).



Western blot analysis of extracts of various cell lines, using LYZ at 1:3000 dilution.



Immunohistochemistry of paraffin-embedded mouse lung using LYZ at dilution of 1:100 (40x lens).

## Background

This gene encodes human lysozyme, whose natural substrate is the bacterial cell wall peptidoglycan (cleaving the beta[1-4]glycosidic linkages between N-acetylmuramic acid and N-acetylglucosamine). Lysozyme is one of the antimicrobial agents found in human milk, and is also present in spleen, lung, kidney, white blood cells, plasma, saliva, and tears. The protein has antibacterial activity against a number of bacterial species. Missense mutations in this gene have been identified in heritable renal amyloidosis.

---

Note: This product is for in vitro research use only