

## Caspase3 Polyclonal Antibody

Catalog No: #27525

Package Size: #27525-1 50ul #27525-2 100ul

Orders: [order@signalwayantibody.com](mailto:order@signalwayantibody.com)Support: [tech@signalwayantibody.com](mailto:tech@signalwayantibody.com)

## Description

|                       |   |
|-----------------------|---|
| Product Name          | Caspase3 Polyclonal Antibody                                      |
| Host Species          | Rabbit  |
| Clonality             | Polyclonal  |
| Isotype               | IgG   |
| Purification          | Affinity purification   |
| Applications          | WB,IHC,IF   |
| Species Reactivity    | Human,Mouse,Rat   |
| Immunogen Description | A synthetic peptide of human Caspase3 (NP_004337.2).              |
| Other Names           | CASP3; CPP32; CPP32B; SCA-1; caspase-3                            |
| Accession No.         | Swiss-Prot#:P42574NCBI Gene ID:836                                |
| Uniprot               | P42574  |
| GeneID                | 836;  |
| Calculated MW         | 32KD  |
| Formulation           | Avoid freeze / thaw cycles. Buffer: PBS with 50% glycerol, pH7.4. |
| Storage               | Store at -20°C  |

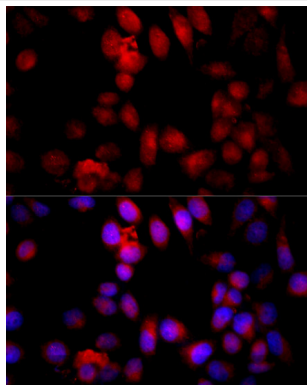
## Application Details

WB □ 1:500 - 1:2000

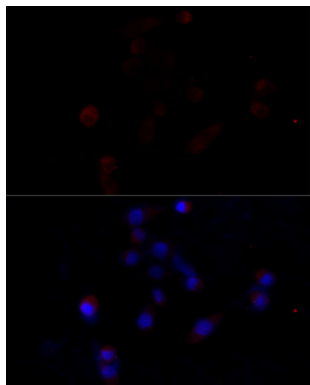
IHC □ 1:50 - 1:200

IF □ 1:50 - 1:200

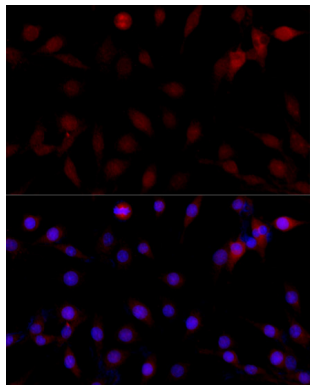
## Images



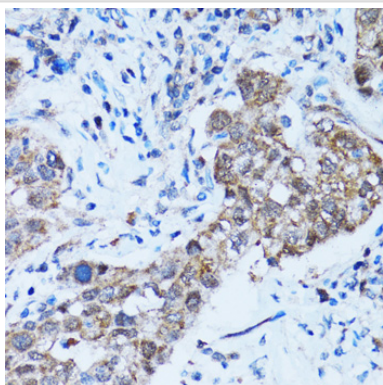
Immunofluorescence analysis of HeLa cells using Caspase-3 at dilution of 1:100 (40x lens). Blue: DAPI for nuclear staining.



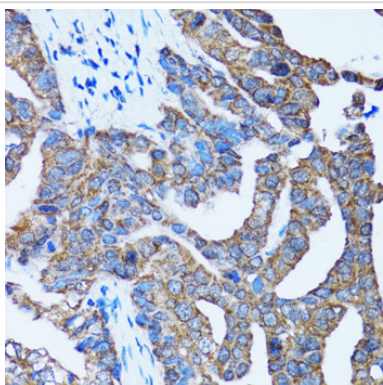
Immunofluorescence analysis of NIH/3T3 cells using Caspase-3 at dilution of 1:100 (40x lens). Blue: DAPI for nuclear staining.



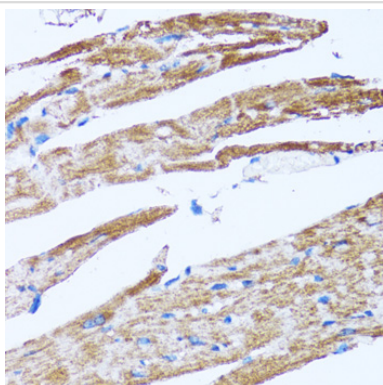
Immunofluorescence analysis of PC-12 cells using Caspase-3 at dilution of 1:100 (40x lens). Blue: DAPI for nuclear staining.



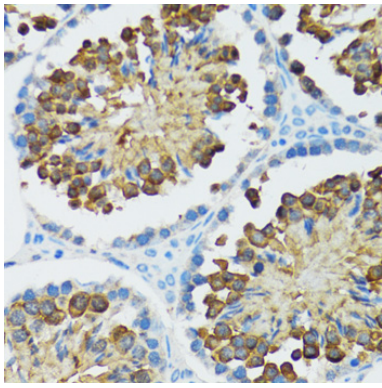
Immunohistochemistry of paraffin-embedded human lung cancer using Caspase-3 at dilution of 1:100 (40x lens).



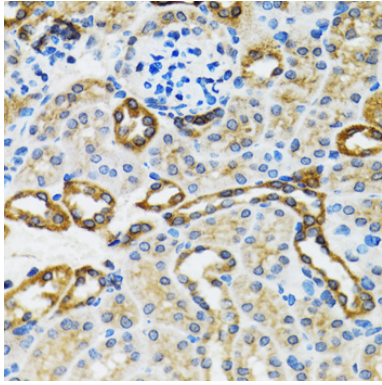
Immunohistochemistry of paraffin-embedded human gastric cancer using Caspase-3 at dilution of 1:100 (40x lens).



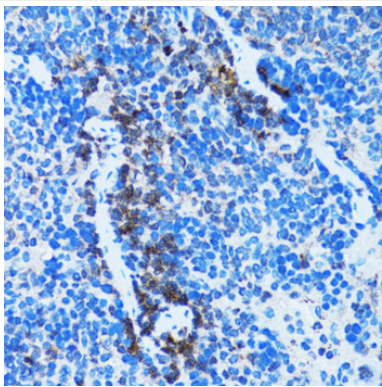
Immunohistochemistry of paraffin-embedded rat heart using Caspase-3 at dilution of 1:100 (40x lens).



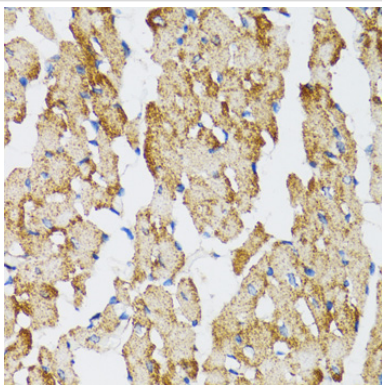
Immunohistochemistry of paraffin-embedded rat testis using Caspase-3 at dilution of 1:100 (40x lens).



Immunohistochemistry of paraffin-embedded rat kidney using Caspase-3 at dilution of 1:100 (40x lens).



Immunohistochemistry of paraffin-embedded rat spleen using Caspase-3 at dilution of 1:100 (40x lens).



Immunohistochemistry of paraffin-embedded mouse heart using Caspase-3 at dilution of 1:100 (40x lens).

## Background

This gene encodes a protein which is a member of the cysteine-aspartic acid protease (caspase) family. Sequential activation of caspases plays a central role in the execution-phase of cell apoptosis. Caspases exist as inactive proenzymes which undergo proteolytic processing at conserved aspartic residues to produce two subunits, large and small, that dimerize to form the active enzyme. This protein cleaves and activates caspases 6, 7 and 9, and the protein itself is processed by caspases 8, 9 and 10. It is the predominant caspase involved in the cleavage of amyloid-beta 4A precursor protein, which is associated with neuronal death in Alzheimer's disease. Alternative splicing of this gene results in two transcript variants that encode the same protein.

---

Note: This product is for in vitro research use only