

ASC / TMS1 Polyclonal Antibody

Catalog No: #27534



Package Size: #27534-1 50ul #27534-2 100ul

Orders: order@signalwayantibody.com
Support: tech@signalwayantibody.com

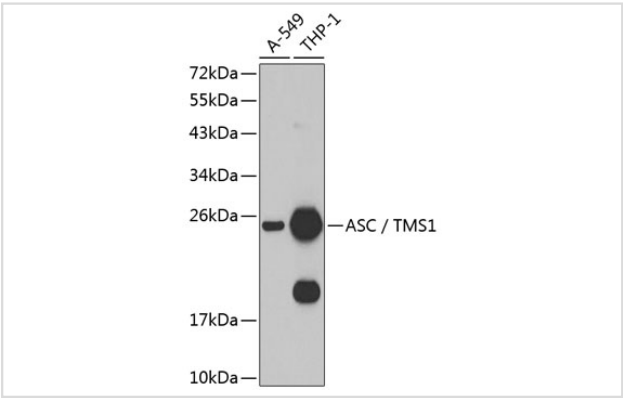
Description

Product Name	ASC / TMS1 Polyclonal Antibody
Host Species	Rabbit
Clonality	Polyclonal
Isotype	IgG
Purification	Affinity purification
Applications	WB,IHC,IF
Species Reactivity	Human,Mouse,Rat
Immunogen Description	Recombinant fusion protein of human ASC / TMS1 (NP_037390.2).
Other Names	PYCARD; ASC; CARD5; TMS; TMS-1; TMS1; PYD and CARD domain containing
Accession No.	Swiss-Prot#:Q9ULZ3NCBI Gene ID:29108
Uniprot	Q9ULZ3
GeneID	29108;
Calculated MW	22kDa
Formulation	Avoid freeze / thaw cycles. Buffer: PBS with 50% glycerol, pH7.4.
Storage	Store at -20°C

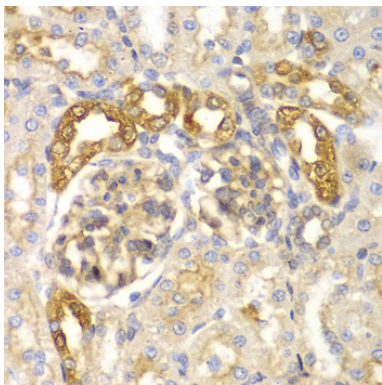
Application Details

WB 1:500 - 1:2000IHC 1:50 - 1:200IF 1:50 - 1:200

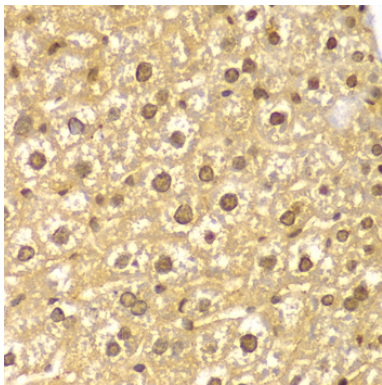
Images



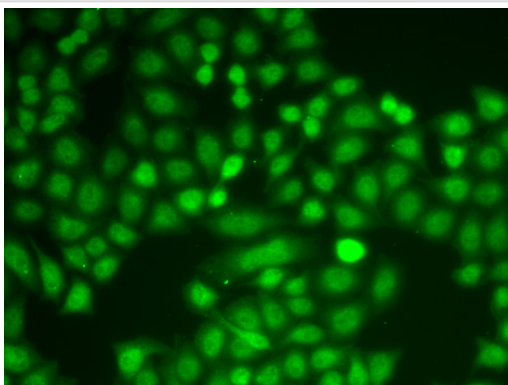
Western blot analysis of extracts of various cell lines, using ASC / TMS1 at 1:1000 dilution.



Immunohistochemistry of paraffin-embedded rat kidney using ASC / TMS1 at dilution of 1:100 (40x lens).



Immunohistochemistry of paraffin-embedded mouse liver using ASC / TMS1 at dilution of 1:100 (40x lens).



Immunofluorescence analysis of A549 cells using ASC / TMS1 .

Background

This gene encodes an adaptor protein that is composed of two protein-protein interaction domains: a N-terminal PYRIN-PAAD-DAPIN domain (PYD) and a C-terminal caspase-recruitment domain (CARD). The PYD and CARD domains are members of the six-helix bundle death domain-fold superfamily that mediates assembly of large signaling complexes in the inflammatory and apoptotic signaling pathways via the activation of caspase. In normal cells, this protein is localized to the cytoplasm; however, in cells undergoing apoptosis, it forms ball-like aggregates near the nuclear periphery. Two transcript variants encoding different isoforms have been found for this gene.

Note: This product is for in vitro research use only