

## OSTM1 Polyclonal Antibody

Catalog No: #27558

Package Size: #27558-1 50ul #27558-2 100ul

Orders: order@signalwayantibody.com

Support: tech@signalwayantibody.com

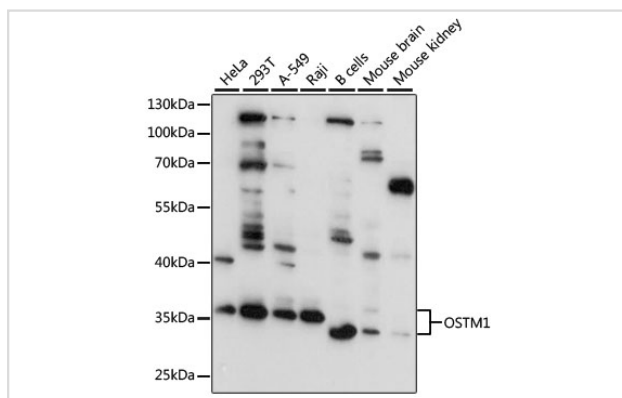
## Description

Product Name	OSTM1 Polyclonal Antibody
Host Species	Rabbit
Clonality	Polyclonal
Isotype	IgG
Purification	Affinity purification
Applications	WB
Species Reactivity	Human,Mouse,Rat
Immunogen Description	Recombinant fusion protein of human OSTM1 (NP_054747.2).
Other Names	OSTM1; GIPN; GL; HSPC019; OPTB5; osteopetrosis-associated transmembrane protein 1
Accession No.	Swiss-Prot#:Q86WC4NCBI Gene ID:28962
Uniprot	Q86WC4
GeneID	28962;
Calculated MW	30-37kDa
Formulation	Avoid freeze / thaw cycles. Buffer: PBS with 50% glycerol, pH7.4.
Storage	Store at -20°C

## Application Details

WB □ 1:500 - 1:2000

## Images



Western blot analysis of extracts of various cell lines, using OSTM1 at 1:3000 dilution.

## Background

This gene encodes a protein that may be involved in the degradation of G proteins via the ubiquitin-dependent proteasome pathway. The encoded protein binds to members of subfamily A of the regulator of the G-protein signaling (RGS) family through an N-terminal leucine-rich region. This protein also has a central RING finger-like domain and E3 ubiquitin ligase activity. This protein is highly conserved from flies to humans. Defects in this gene may cause the autosomal recessive, infantile malignant form of osteopetrosis.

---

Note: This product is for in vitro research use only