

# SBF1 Polyclonal Antibody

Catalog No: #27677



Package Size: #27677-1 50ul #27677-2 100ul

Orders: [order@signalwayantibody.com](mailto:order@signalwayantibody.com)  
Support: [tech@signalwayantibody.com](mailto:tech@signalwayantibody.com)

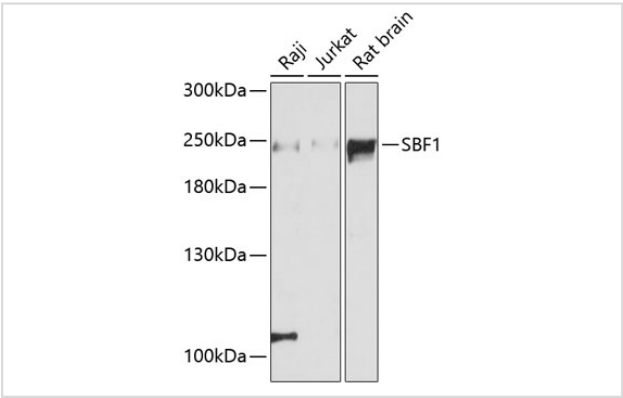
## Description

Product Name	SBF1 Polyclonal Antibody
Host Species	Rabbit
Clonality	Polyclonal
Isotype	IgG
Purification	Affinity purification
Applications	WB
Species Reactivity	Human,Rat
Immunogen Description	Recombinant fusion protein of human SBF1 (NP_002963.2).
Other Names	SBF1; CMT4B3; DENND7A; MTMR5; SET binding factor 1
Accession No.	Swiss-Prot#:O95248NCBI Gene ID:6305
Uniprot	O95248
GeneID	6305;
Calculated MW	208kDa
Formulation	Avoid freeze / thaw cycles. Buffer: PBS with 50% glycerol, pH7.4.
Storage	Store at -20°C

## Application Details

WB 1:500 - 1:2000

## Images



Western blot analysis of extracts of various cell lines, using SBF1 at 1:3000 dilution.

## Background

This gene encodes a member of the protein-tyrosine phosphatase family. However, the encoded protein does not appear to be a catalytically active phosphatase because it lacks several amino acids in the catalytic pocket. This protein contains a Guanine nucleotide exchange factor (GEF) domain which is necessary for its role in growth and differentiation. Mutations in this gene have been associated with Charcot-Marie-Tooth disease 4B3. Pseudogenes of this gene have been defined on chromosomes 1 and 8.

---

Note: This product is for in vitro research use only