

C1 Inactivator Polyclonal Antibody

Catalog No: #27694

Package Size: #27694-1 50ul #27694-2 100ul

Orders: order@signalwayantibody.com

Support: tech@signalwayantibody.com

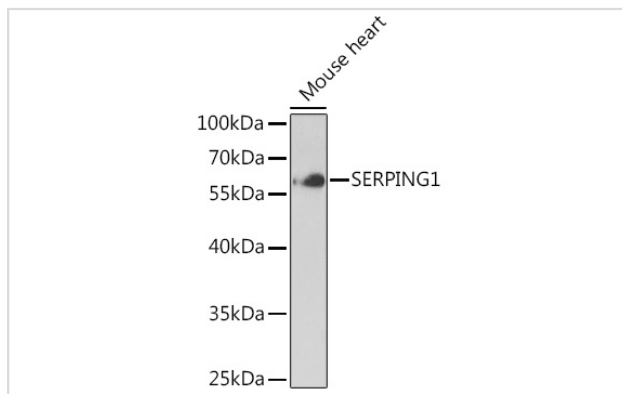
Description

Product Name	C1 Inactivator Polyclonal Antibody
Host Species	Rabbit
Clonality	Polyclonal
Isotype	IgG
Purification	Affinity purification
Applications	WB
Species Reactivity	Human,Mouse,Rat
Immunogen Description	Recombinant fusion protein of human SERPING1 (NP_001027466.1).
Other Names	SERPING1;C1IN;C1INH;C1NH;HAE1;HAE2
Accession No.	Uniprot:P05155GenelD:710
Uniprot	P05155
GeneID	710
Calculated MW	60kDa
SDS-PAGE MW	60kDa
Formulation	PBS with 0.02% sodium azide,50% glycerol,pH7.3.
Storage	Store at -20°C. Avoid freeze / thaw cycles.

Application Details

WB □ 1:500 - 1:2000

Images



Western blot analysis of extracts of mouse heart, using SERPING1 Antibody.

Background

This gene encodes a highly glycosylated plasma protein involved in the regulation of the complement cascade. Its protein inhibits activated C1r and C1s of the first complement component and thus regulates complement activation. Deficiency of this protein is associated with hereditary angioneurotic oedema (HANE). Alternative splicing results in multiple transcript variants encoding the same isoform.

Note: This product is for in vitro research use only