

SEMG2 Polyclonal Antibody

Catalog No: #27801



Package Size: #27801-1 50ul #27801-2 100ul

Orders: order@signalwayantibody.com
Support: tech@signalwayantibody.com

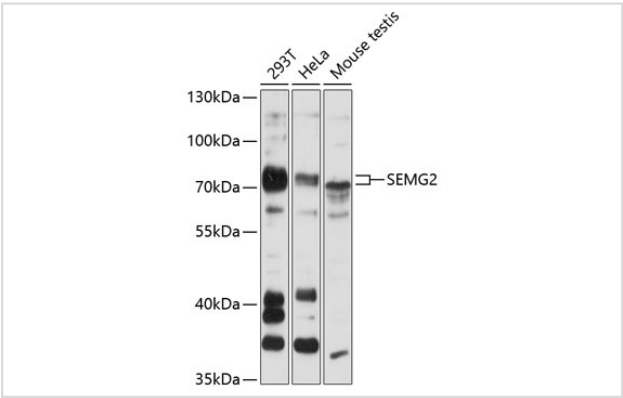
Description

Product Name	SEMG2 Polyclonal Antibody
Host Species	Rabbit
Clonality	Polyclonal
Isotype	IgG
Purification	Affinity purification
Applications	WB
Species Reactivity	Human,Mouse
Immunogen Description	Recombinant fusion protein of human SEMG2 (NP_002999.1).
Other Names	SEMG2; SGII; semenogelin-2
Accession No.	Swiss-Prot#:Q02383NCBI Gene ID:6407
Uniprot	Q02383
GeneID	6407;
Calculated MW	75kDa
Formulation	Avoid freeze / thaw cycles. Buffer: PBS with 50% glycerol, pH7.4.
Storage	Store at -20°C

Application Details

WB 1:500 - 1:2000

Images



Western blot analysis of extracts of various cell lines, using SEMG2 at 1:3000 dilution.

Background

The secreted protein encoded by this gene is involved in the formation of a gel matrix that encases ejaculated spermatozoa. Proteolysis by the prostate-specific antigen (PSA) breaks down the gel matrix and allows the spermatozoa to move more freely. The encoded protein is found in lesser abundance than a similar semenogelin protein. An antibacterial activity has been found for a antimicrobial peptide isolated from this protein. The genes encoding these two semenogelin proteins are found in a cluster on chromosome 20.

Note: This product is for in vitro research use only