

## RPC10 Antibody

Catalog No: #45936

Package Size: #45936-1 50ul #45936-2 100ul

Orders: order@signalwayantibody.com

Support: tech@signalwayantibody.com

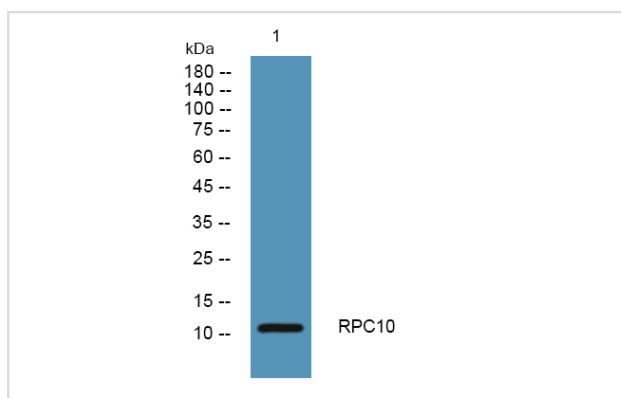
## Description

Product Name	RPC10 Antibody
Host Species	Rabbit
Clonality	Polyclonal
Purification	Immunogen affinity purified
Applications	WB
Species Reactivity	Hu Ms Rt
Specificity	RPC10 Antibody detects endogenous levels of total RPC10
Immunogen Type	Peptide
Immunogen Description	A synthesized peptide derived from human RPC10
Target Name	RPC10
Other Names	POLR3K, C11-RNP3, My010, HRPC11, RNA polymerase III subunit C10, RNA polymerase III subunit C11, RPC11, RPC12.5, C11, HsC11p, RNA polymerase III subunit CII, RPC10
Accession No.	Swiss-Prot#: Q9Y2Y1NCBI Gene ID:51728
Uniprot	Q9Y2Y1
GeneID	51728;
Calculated MW	12 kDa
Concentration	1.0mg/mL
Formulation	Liquid in PBS containing 50% glycerol, and 0.02% sodium azide.
Storage	Store at -20°C

## Application Details

Western blotting: 1:1000-3000

## Images



Western blot analysis of lysates from Jarkat cells, primary antibody was diluted at 1:1000, 4o½ over night

---

Note: This product is for in vitro research use only